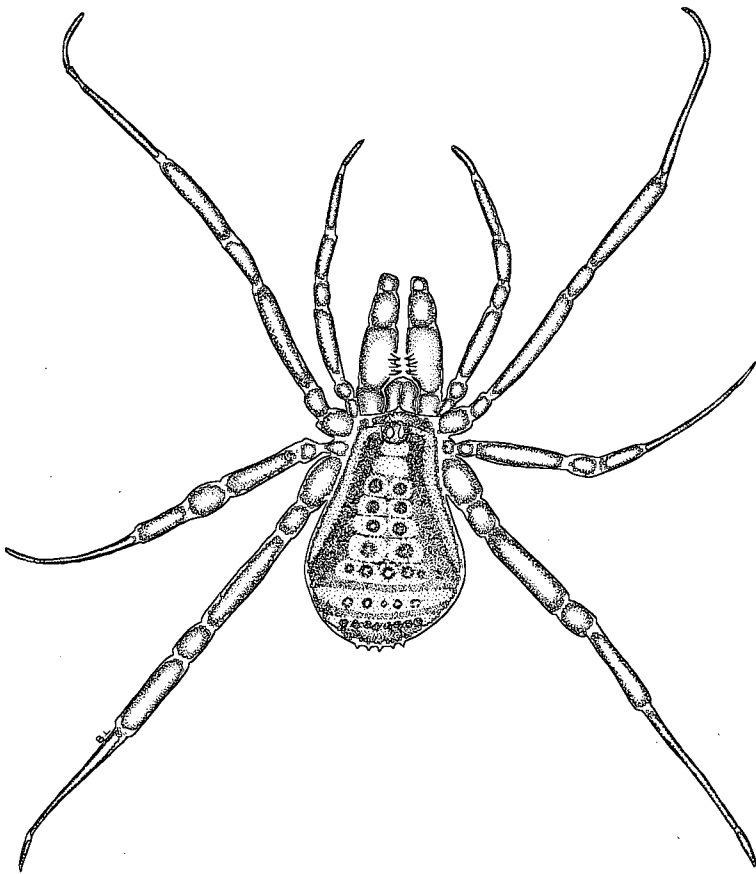


An annotated check-list of  
Afrotropical harvestmen, excluding  
the Phalangiidae

(Opiliones)

Wojciech Staręga



## An annotated check-list of Afrotropical harvestmen, excluding the Phalangidae (Opiliones)

by

Wojciech Starega<sup>1</sup>

(Natal Museum, P. B. 9070, 3200 Pietermaritzburg, South Africa)

### ABSTRACT

A check-list of all known Afrotropical harvestmen, with exception of the family Phalangidae, is provided. The following taxonomic changes are made: 28 generic and 45 specific synonymies, 37 new combinations and 3 new names.

Generic synonymies: *Cryptobunus* Lawrence, 1931 = *Amatola* Lawrence, 1931; *Flavonuncia* Lawrence, 1959 = *Hovanuncia* Lawrence, 1959; *Spinimontia* Roewer, 1914, *Tanalaius* Roewer, 1914 & *Triacumontia* Roewer, 1914 = *Acumontia* Loman, 1898 (all Triaenonychidae); *Ambolotsca* Roewer, 1949 = *Ereanana* Strand, 1911 (Ereananaidae); *Argobba* Roewer, 1935 & *Harsadia* Roewer, 1935 = *Amhara* Pavesi, 1897; *Assiniana* Roewer, 1914 & *Aburitius* Roewer, 1935 = *Sassandria* Roewer, 1912; *Coelobunus* Loman, 1902 = *Dicoryphus* Loman, 1902; *Faradjea* Roewer, 1950 = *Ereala* Roewer, 1950; *Gobabisia* Roewer, 1940 = *Namutonia* Lawrence, 1931; *Monorhabdium* Loman, 1902, *Metachilon* Roewer, 1923, *Parachilon* Roewer, 1923, *Bindercola* Roewer, 1935, *Tsadsea* Roewer, 1935, *Acanthocoryphus* Roewer, 1953, *Sangalkamia* Roewer, 1953, *Villersiella* Roewer, 1953 & *Kobacoryphus* Roewer, 1961 all = *Chilon* Sørensen, 1896; *Othmar* Roewer, 1935 = *Orsimonia* Roewer, 1935; *Phezilbus* Roewer, 1935 = *Sidama* Pavesi, 1895; *Pseudoacaca* Caporiacco, 1949 = *Acaca* Roewer, 1935; *Pungoiella* Roewer, 1914 & *Pygoselenca* Roewer, 1953 = *Pungoica* Roewer, 1914; *Tengelinia* Roewer, 1935 = *Binderella* Roewer, 1935 (all Assamiidae).

Specific synonymies: *Acumontia lomani* Roewer, 1914, *Spinimontia lomani* Roewer, 1914 & *Triacumontia lomani* Roewer, 1914 = *Acumontia armata* Loman, 1898; *Adaeulum coxidens* Lawrence, 1931 = *Adaeulum godfreyi* Lawrence, 1931; *Adaeum brincki* Kauri, 1961 = *Adaeum capense* (Roewer, 1914); *Ceratomontia hewitti* Lawrence, 1931 = *Ceratomontia cheliplus* Roewer, 1931; *Cryptobunus silvicolus* Lawrence, 1937 = *Amatola setifemur* (Lawrence, 1931); *Tanalaius alluaudi* Roewer, 1914 = *Acumontia pococki* Roewer, 1914; *Triacumontia centralis* Lawrence, 1959 = *Acumontia spinifrons* (Roewer, 1914); *Triacumontia nigra perinetensis* Lawrence, 1959 = *Acumontia nigra* (Lawrence, 1959); *Conomma annobomum* Roewer, 1949 = *Conomma princepa* Roewer, 1949; *Ereanana bicolor* Roewer, 1915, *Ereanana verrucosa* Roewer, 1949, *Ereanana ruandana* Roewer, 1949 & *Ereanana chelispina* Roewer, 1950 = *Ereanana typus* (Sørensen, 1910); *Palpipes horridus* Sørensen, 1910 = *Ereanana mordax* (Sørensen, 1910); *Paribalonius bimaculatus duplex* Roewer, 1923 = *Paribalonius inscriptus* (Loman, 1902); *Amasis accentuatus* Sørensen, 1910, *Amasis mesoleucus* Sørensen, 1910, *Amasis quadricornis* Sørensen, 1910 & *Hypoxestus obscurus* Roewer, 1912 = *Hypoxestus levis* Loman, 1902; *Assiniana reticulata* Roewer, 1914, *Aburitius inermis* Roewer, 1935 & *Aburitius yapo* Roewer, 1935 = *Sassandria bicolor* Roewer, 1912; *Chilon nobilis* Sørensen, 1896 & *Villersiella coxalis* Roewer, 1953 = *Chilon scaber* Sørensen, 1896; *Chilon undulatus* Sørensen, 1896, *Monorhabdium singulare* Loman, 1902, *Chilon armatus* Roewer, 1912, *Chilon ferrugineus* Roewer, 1912, *Monorhabdium echinatum* Roewer, 1912, *Chilon atroluteus* Roewer, 1916, *Tsadsea picta* Roewer, 1935, *Parachilon bistriatus* Roewer, 1940 & *Parachilon bicolor* Roewer, 1942 = *Chilon robustus* Sørensen, 1896; *Coelobunus fuscus* Roewer, 1912 = *Dicoryphus melanacanthus* (Loman, 1902); *Eupodauchenius marginatus* Roewer, 1912 = *Eupodauchenius luteocruciatus* (Loman, 1910); *Faradjea schoutedeni* Roewer, 1950 = *Ereala armata* Roewer, 1950; *Harsadia spinosa* Roewer, 1935 = *Amhara grata* Pavesi, 1897; *Parazalmoxis röweri* Caporiacco, 1949 & *Hypoxestus holmi* Goodnight & Goodnight, 1959 = *Parazalmoxis africana* Roewer, 1913; *Phezilbus spiniger* Roewer, 1935 = *Sidama abessinica* Roewer,

Present address: Institute of Biology, University of Warsaw, P. O. Box 109, Białystok, Poland.

1912; *Pungoica decorata* Lawrence, 1947 & *Pygoseleuca albispinata* Roewer, 1953 = *Pungoica bifurcata* (Roewer, 1914); *Tengelinia paradoxa* Roewer, 1935 = *Binderella bistrata* Roewer, 1935.

New combinations: *Cryptobunus armatus* Lawrence, 1938, *Cryptobunus durbanicus* Lawrence, 1937, *Cryptobunus maritimus* Lawrence, 1937, *Cryptobunus setifemur* Lawrence, 1931 & *Cryptobunus unidentatus* Lawrence, 1937 transferred to *Amatola* Lawrence, 1931; *Spinimontia capitata* Lawrence, 1959, *Tanalaius flavispinus* Lawrence, 1959, *Tanalaius hystrix* Lawrence, 1959, *Tanalaius milloti* Lawrence, 1959, *Triacumontia alluaudi* Roewer, 1914, *Triacumontia nigra* Lawrence, 1959, *Triacumontia soereni* Roewer, 1914, *Triacumontia spinifrons* Roewer, 1914, *Triacumontia venator* Roewer, 1931, *Triaenomontia hispida* Roewer, 1914 & *Triaenomontia horrida* Roewer, 1914 transferred to *Acumontia* Loman, 1898; *Ambolotisca remyi* Roewer, 1949 transferred to *Erecanana* Strand, 1911; *Acanthocoryphus laevituber* Roewer, 1953, *Acanthophrysella horrida* Roewer, 1935, *Kobacoryphus royi* Roewer, 1961, *Sangalkamia villiersi* Roewer, 1953 & *Scotolemon salebrosa* Karsch, 1879 transferred to *Chilon* Sørensen, 1910; *Argobba nigrescens* Roewer, 1935 transferred to *Amhara* Pavesi, 1897; *Caelobunus ater* Lawrence, 1962, *Coelobunus melanacanthus* Loman, 1902 & *Metarhabdopygus jeanneli* Roewer, 1913 transferred to *Dicoryphus* Loman, 1902; *Gobabisia wuehlischi* Roewer, 1940 transferred to *Namutonia* Lawrence, 1931; *Othmar gracillimus* Roewer, 1935 transferred to *Orsimonia* Roewer, 1935; *Pseudacaca liobunifomis* Caporiacco, 1949 transferred to *Acaca* Roewer, 1935; *Pungoiella bifurcata* Roewer, 1914 transferred to *Pungoica* Roewer, 1914; *Acrobiantes littoralis* Lawrence, 1959, *Acrobiantes pardalis* Lawrence, 1959, *Biantes milloti* Fage, 1946, *Biantes tenebrosus* Lawrence, 1959 & *Hovabiantes pauliani* Lawrence, 1959 transferred to *Hinzuanus* Karsch, 1880; *Spinibiantes insulanus* Roewer, 1949 transferred to *Metabiantes* Roewer, 1915.

New names: *Acumontia roeweri* pro *Triacumontia pococki* Roewer, 1914 nec *Acumontia pococki* Roewer, 1914; *Hypoxestus roeweri* pro *Randilea obscura* Roewer, 1952 nec *Hypoxestus obscurus* Roewer, 1912; *Metabiantes lawrencei* pro *Metabiantes obscurus* Lawrence, 1962 nec Kauri, 1961.

Family status has been given to Erecananidae and Samoidae, previously regarded as subfamilies in Phalangodidae.

#### INTRODUCTION

The first publication concerning harvestmen of Africa south of the Sahara appeared over 150 years ago (Guérin-Méneville 1838). This was followed much later by the papers of F. Karsch, P. Pavesi, E. Simon, W. Sørensen, J. C. C. Loman and R. I. Pocock in the last three decades of the 19th and early part of the 20th centuries. The contributions of these authors, valuable as they were, provided only fragmentary knowledge of the fauna. The period is aptly summed up by Loman (1898: 515): '... schreckliche Kenntniswüste ...' with '... wenigen Oasen ...'. Noticeable progress was made with the numerous papers of C. F. Roewer (starting from 1912) and R. F. Lawrence (from 1931). Further descriptions were also provided by S. Hirst, H. J. Hansen, L. di Caporiacco, L. Fage, C.J. & M. L. Goodnight, C. Juberthie (1969) and last, but not least, H. Kauri, whose last two papers (1961 1985) contributed not only descriptions of numerous new taxa but also some revisions – the latter previously rare in studies of Afrotropical harvestmen. Further revisionary work, although not necessarily restricted to the African fauna, followed in papers by J. A. Rosas Costa (1950), C. Juberthie (1970 1971), W. A. Shear (1980 1985), all dealing with the suborder Cyphophthalmi, Shear (1975) on Caddidae, and by Staręga (1984) with Phalangiidae. The last mentioned paper contains a catalogue of the Afrotropical species, so the family is now omitted to avoid repetition.

The number of nominal species described from the Afrotropical Region presently stands at 707 with the largest families being: Assamiidae (*sensu lato*) (291 species), Triaenonychidae (155), Phalangiidae (84), Biantidae (81) and

'Phalangodidae' (43); the remaining 10 families are small, with between 1 and 13 species.

The most thoroughly studied and best known fauna is undoubtedly that of the Republic of South Africa (RSA) with 158 species (+ 1 doubtful), excluding the Phalangiidae. The fauna here is not only the richest in respect of species number, but also already partly revised or reviewed. Significant numbers of nominal species have also been described (or recorded) from Zaïre (136 species), Tanzania (77 + 1 doubtful), Madagascar (54), Cameroon (47) and the Ivory Coast (37 species). Between 11 and 20 species are known from Ghana, Togo, Equatorial Guinea (Bioko Isl.), São Tomé and Príncipe, Uganda, Rwanda, Ethiopia, Kenya, Angola, Mozambique and Seychelles. Fewer than ten species are recorded from Guinea-Bissau, Senegal, Liberia, Sierra Leone, Nigeria, Chad, Gabon, Congo, Burundi, Malaŵi, Zimbabwe, Namibia, Botswana, Swaziland, Lesotho, Transkei, Ciskei, South Yemen (Socotra Isl.), Mascarenes and Comoros. No species are known from Gambia, Guinea, Mali, Niger, Burkina Faso, Central African Republic, Benin, Somalia, Zambia, Venda and Bophuthatswana.

This check-list is presented as a useful starting point for further revisionary studies of the Afrotropical harvestmen. It includes a considerable number of taxonomic changes: 28 generic and 45 specific synonymies, 37 new combinations and 3 new names. They result from work during my stay in the Senckenberg Museum in Frankfurt (May – October 1987) and subsequently at the Natal Museum (October 1987 – November 1989). In Frankfurt I mainly studied genera in the Assamiidae family-complex from Ethiopia and West Africa. In Pietermaritzburg a large variety of families, chiefly from the southern part of Africa, were studied. Several papers are already in press and others are in different stages of preparation.

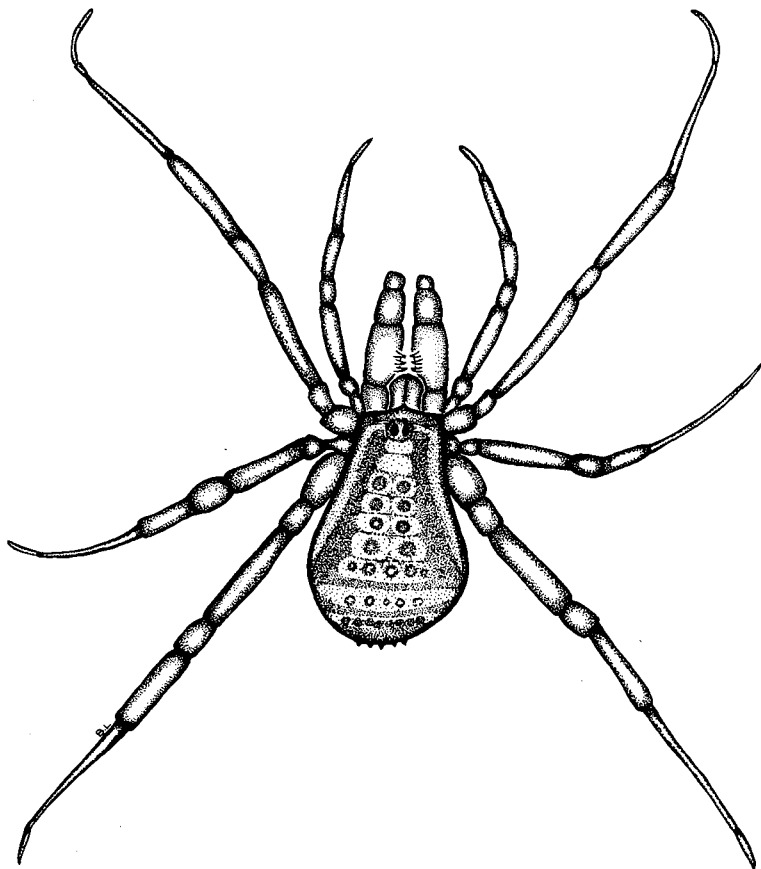
Some comments concerning the arrangement of the text should be given to avoid confusion. The families are largely arranged in a suggested phylogenetical sequence, but suborders have been omitted. Subfamily groups have also been omitted, with the exception of the Triaenonychidae. The genera (and species) are listed in alphabetical order. The type species of every genus is marked with an asterisk (\*). Citation of the original description is omitted when the original combination has been accepted. Subsequent taxonomic changes are cited, and those papers dealing with new material and new distributional data are numbered (starting from 2: 1 always refers to the original description). Other citations previously provided in the literature (eg. in Roewer 1923 1949*b* or Kauri 1961) are omitted. Material not previously recorded is listed with an indication of the museum where it is stored (with or without an accession number) – instead of a reference citation. This is specially the case for South African museums and the State Museum in Windhoek, Namibia (SMW). The countries are normally arranged starting from the West and North but the localities within the countries mostly at random, because it was not always possible to find them on maps. The spelling of locality names may, for the same reason, not always be correct. For every species the institution(s) housing the type material is indicated. Type

material seen by me is marked with an asterisk (\*). The following is a list of institutions with Afrotropical type material:

- AMNH – American Museum of Natural History, Department of Entomology, Central Park West at 79th Street, New York, NY 10024, USA – type material of 5 species.
- BMNH – British Museum (Natural History), Department of Zoology, Cromwell Road, London SW7 5BD, U.K. – type material of 24 species.
- HNHM – Természettudományi Múzeum Állattara, Baross utca 13, H-1088 Budapest – type material of 1 species.
- MCSN – Museo Civico di Storia Naturale ‘Giacomo Doria’, Via Brigata Liguria 9, I-16121 Genova – type material of 10 species;
- MHNG – Muséum d’Histoire Naturelle, Département des Arthropodes, Case postale 434, CH-1211 Genève 6 – type material of 1 species;
- MNHN – Muséum National d’Histoire Naturelle, Laboratoire des Arthropodes, 61 rue de Buffon, F-75231 Paris – type material of 100 species;
- MRAC – Musée Royal de l’Afrique Centrale, Section d’Entomologie, Leuvensesteenweg 13, B-1980 Tervuren – type material of 126 species;
- MWNH – Museum Wiesbaden, Zoologische Sektion, Friedrich-Ebert-Allee 2, D-6200 Wiesbaden – type material of 3 species;
- MZLU – Lunds Universitets Zoologiska Museum, Helgonav. 3, S-223 62 Lund – type material of 26 species;
- MZUF – Museo Zoologico ‘La Specola’, Via Romana 17, I-50125 Firenze – type material of 3 species;
- NCAP – National Collection of Arachnids, Plant Protection Research Institute, Priv. Bag X134, Pretoria 0001, R.S.A. – type material of 1 species;
- NHRS – Naturhistoriska Riksmuseet, Sektionen för entomologi, S-104 05 Stockholm – type material of 27 species.
- NMBA – National Museum, Department of Entomology, P.O. Box 266, Bloemfontein 9300, R.S.A. – type material of 1 species;
- NMSA – Natal Museum, Department of Arachnology, Priv. Bag 9070, Pietermaritzburg 3200, R.S.A. – type material of 75 species;
- SAMC – South African Museum, P.O. Box 61, Cape Town 8000, R.S.A. – type material of 61 species.
- SMF – Forschungsinstitut und Naturmuseum Senckenberg, Senckenberganlage 25, D-6000 Frankfurt a. M. 1 – type material of 265 species – the world’s biggest collection.
- TMSA – Transvaal Museum, Department of Lower Vertebrates and Invertebrates, P.O. Box 413, Pretoria 0001, R.S.A. – type material of 2 species.
- UZIUI – Universitets Zoologiska Institut, Villav. 9, Uppsala, Sweden – type material of 6 species.

- ZMAN - Instituut voor Taxonomische Zoologie, Zoologisch Museum, Universiteit van Amsterdam, Plantage Middenlaan 64, NL-1018 DH Amsterdam - type material of 5 species;
- ZMHB - Museum für Naturkunde der Humboldt-Universität, Zoologisches Museum, Invalidenstr. 43, D-1040 Berlin - type material of 29 species;
- ZMUB - Zoologisk Museum, Bergens Universitet, Museplats 3, N-5000 Bergen - type material of 1 species;
- ZMUC - Zoologisk Museum, Universitet København, Universitetsparken 15, DK-2100 København Ø - type material of 5 species;
- ZMUH - Zoologisches Institut und Zoologisches Museum der Universität Hamburg, Martin-Luther-King-Platz 3, D-2000 Hamburg 13 - type material of 14 species.

I would like to express my sincere thanks to the curators of the collections in Genova (Dr G. Arbocco) and Berlin (Dr M. Moritz), who enabled me to study some valuable old type material. But first of all my thanks are due to Dr M. Grasshoff (SMF) whose hospitality and helpfulness were an invaluable assistance during my stay in Frankfurt.



## CHECK-LIST

## Triaenonychidae

## Adaeinae

*Adaeulum* Roewer, 1914*A. areolatum* (Pocock, 1902)\*

*Adaeulum areolatum* Pocock, 1902a

*Adaeulum areolatum*: Roewer 1931 (2), Lawrence 1931 (3)

RSA (Cape Prov.): Olifantskop in Suurberge Mts (NMSA 8394), Doornek (3), Grahamstown (1, 3), Cold Springs (3), Cathcart (3), Blythswood (NMSA 14444), Fairford (NMSA 14445), Port Alfred (3), Alexandria Forest (NMSA 8434, 14452), Kasouga (NMSA 14442), East London (3). Transkei: Somerville nr Tsolo (3). Doubtful localities – RSA (Natal): Durban (2); Namibia: Windhoek (2). [Types: BMNH]

*A. bicolor* Lawrence, 1931

RSA (Natal): Kranskop (NMSA 2822, 6053), Mazongwaan Forest (NMSA 2826), Hluhluwe Game Reserve (NMSA 57), Mtubatuba (TMSA 15350), Empangeni (NMSA 14759), Nkandhla Forest Reserve (NMSA 12, 907, 1070, 14760), Ngoye Forest (NMSA 4159), Mfongosi (1), Umhlali Beach (NMSA 2835, 6098, 6130, 7681), Sheffield Beach (NMSA 1074), Compensation Beach (NMSA 4, 21), Newsel Beach (NMSA 4111), Inchanga (1), Durban – Burman Bush (NMSA 8427), – The Bluff (NMSA 64). [Types: SAMC\*]

*A. brevidentatum* Lawrence, 1934

RSA (Cape Prov.): Hogsback. [Types: SAMC\*]. Probably synonym of *A. godfreyi*.

*A. coronatum* Kauri, 1961

RSA (Natal): Royal Natal Nat. Park (1), Mont-aux-Sources (NMSA 4110), Cathedral Peak (NCAP 77/534), Cathkin Peak (NMSA 1835, 2863, 14789), Champagne Castle Hotel (NMSA 4145, 6135), Giant's Castle Game Reserve (NMSA 2782), Dargle (NMSA 4103), Umgeni Poort (NMSA 872), Impendle (NMSA 4127), Bulwer (NMSA 899, 900, 1079, 1853), Greytown (NMSA 8448), Kranskop (NMSA 2826), York (NMSA 2799), Karkloof Falls Nature Reserve (NMSA 889, 903, 14793, 14794, 14795), Shooters Hill (NMSA 1821), Pietermaritzburg – Town Bush (NMSA 2809, 2864, 14767, 14768), Sweet Waters (NMSA 1826), Swartkop (NMSA 874, 6082). [Holotype: MZLU]

*A. godfreyi* Lawrence, 1931

*Adaeulum coxidens* Lawrence, 1931, **syn. n.** (2)

RSA (Cape Prov.): Bosberg nr Somerset East (NMSA 8441), Amatola Mts (2), Kologha Forest (NMSA 8403), Isidenge State Forest (NMSA 14296). Ciskei: Pirie nr Bisho (1). [Types: *godfreyi* – NMSA\*; *coxidens* – SAMC\*, SMF]

*A. humifer* Lawrence, 1963

RSA (Transvaal): Louis Trichardt, Mariepskop, Magoebaskloof. [Types: NMSA\*]

*A. monticola* Lawrence, 1939

*Adaeulum monticulum* Lawrence, 1939 [ICZN, Art. 11h]

RSA (Natal): Little Tugela (NMSA 1829), Cathkin Peak Forest Reserve (1), Cathedral Peak (NMSA 6096), Champagne Castle Hotel (NMSA 4079, 4084, 4087, 6044, 6075, 6123), Giant's Castle Game Reserve (NMSA 14792). [Types: NMSA\*]

*A. moruliferum* Lawrence, 1938

RSA (Orange F. S.): Van Reenen (1); (Natal): Mountain View nr Kranskop (NMSA 14761). [Types: NMSA\*]

*A. robustum* Lawrence, 1937a*Adaeulum robustum*: Kauri 1950 (2)

RSA (Natal): Giant's Castle Game Reserve (NMSA 2781), Dargle (NMSA 2868), Balgowan (NMSA 1110), Rockwood Farm (NMSA 14305), Karkloof Falls Nature Reserve (1, 2), Pietermaritzburg (1, 2). [Types: NMSA\*]

*A. supervidens* Lawrence, 1933

RSA (Natal): Winklespruit (NMSA 38), Park Rynie (NMSA 1850), Kelso (NMSA 14478), Port Shepstone (NMSA 4072), Beach Terminus (NMSA 1042), Port Edward (1). [Types: SAMC\*]

*A. warreni* Lawrence, 1933*Adaeulum warreni*: Lawrence 1939 (2), 1947a (3)

RSA (Natal): Cathkin Peak Forest Reserve (2), Nottingham Road (2), Shooters Hill (2), Impendle (NMSA 15452), Boston (NMSA 4083), Bulwer (2), Karkloof Falls Nature Reserve (2), Albert Falls Nature Reserve (NMSA 2865), Pietermaritzburg (1, 2), Impotweni (2), Swartkop (2), Sweet Waters (2), Shongweni Dam (NMSA 17), Drummond (2), Pinetown (3), Durban – Umgeni Bush (NMSA 14). [Types: SAMC\*]

*Adaeum* Karsch, 1880*A. asperatum* Karsch, 1880\*

RSA (Cape Prov.): 'Cap' (Pocock 1902a: Port Elizabeth ?) [Holotype: ZMHB]

*A. capense* (Roewer, 1914)*Metadaeum capense* Roewer, 1914*Adaeum brincki* Kauri, 1961 (2), **syn. n.***Adaeum capense*: Kauri 1961RSA (Cape Prov.): Alicedale (NMSA 14458), Uitenhage (2), Van Stadenspas (2), Skoenmakerskop (NMSA 7865), Port Elizabeth (1). [Types: *capense* – SMF\*; *brincki* – MZLU]*A. granulosum* Lawrence, 1931

RSA (Cape Prov.): Swartberg Pass nr Prince Albert. [Holotype: SAMC]

*A. hewitti* Roewer, 1931

RSA (Cape Prov.): Grahamstown. [Type: SMF\*]

*A. latens* Loman, 1898

RSA (Cape Prov.): Knysna. [Types: ZMAN]

*A. obtectum* Loman, 1898

RSA (Cape Prov.): Knysna. [Types: ZMAN]

*A. spatulatum* Lawrence, 1931

RSA (Cape Prov.): George (1), Alicedale (NMSA 14460), Cold Springs (NMSA 14461). [Types: SAMC]

*A. squamatum* Lawrence, 1931

Transkei: Umngazi Mouth (NMSA 6059, 14780), Port St Johns (NMSA 4095, 4097), Somerville nr Tsolo (1). RSA (Natal): Port Edward (NMSA 14769), Vernon Crookes Nature Reserve (NCAP 86/617). [Holotype: NMSA\*]

*Cryptadaeum* Lawrence, 1931*C. capense* Lawrence, 1931\*

RSA (Cape Prov.): St James (1), Kirstenbosch Botanical Garden (NMSA 14263). [Types: NMSA\*, SMF]



*Heteradaeum* Lawrence, 1963*H. exiguum* Lawrence, 1963

RSA (Transvaal): Louis Trichardt. [Types: NMSA]

*Larifuga* Loman, 1898*L. avus* Staręga, 1989b

RSA (Cape Prov.): Grootvadersbosch Forest Station, Tradouw Pass – both nr Heidelberg. [Holotype: NMSA\*, paratypes: NCAP\*, NMBA\*, SMF\*]

*L. calcarata* Lawrence, 1931

*Larifuga calcarata*: Kauri 1961 (2), Staręga 1989b (3)

RSA (Cape Prov.): Millwood (2), Robinson Pass (2), Nature's Valley (2, 3), Bloukrans River (2), Tsitsikamma Forest Nat. Park (2), Tsitsikamma Coastal Nat. Park (3), Humansdorp (1). [Types: SAMC, SMF]

*L. capensis* Lawrence, 1931

*Larifuga capensis*: Lawrence 1938b (2), Staręga 1989b (3)

RSA (Cape Prov.): Cape Town (2), Table Mt (1), Chapman's Peak (1), Newlands (1, 3), Kirstenbosch Gardens (3). [Types: SAMC, SMF]

*L. dentifer* Lawrence, 1931

RSA (Cape Prov.): Riviersonderend. [Types: SAMC, SMF]

*L. granulosa* Lawrence, 1931

*Larifuga granulosa* Staręga 1989b (2)

RSA (Cape Prov.): Riviersonderend (1, 2), Caledon (2), Bredasdorp (2), Elim (1), Houhoek (1). [Types: SAMC, SMF]

*L. mantonae* Lawrence, 1934

*Larifuga mantoni* Lawrence, 1934 [ICZN, Art. 31a]

*Larifuga mantonae*: Staręga 1989b (2)

RSA (Cape Prov.): Hogsback (1, 2). [Types: NMSA]

*L. montana* Lawrence, 1931

*Larifuga montana*: Kauri 1961 (2), Staręga 1989b (3)

RSA (Cape Prov.): Simonstown (1), St James (1), Hout Bay (1, 2), Kalk Bay (1), Bergvliet (1), Newlands (1), Brandvlei Lake nr Villiersdorp (2), De Hoop Vlei nr Bredasdorp (2) Cape Peninsula – Loc. ? (3). [Types: SAMC, SMF]

*L. oneraria* Kauri, 1961

RSA (Cape Prov.): Tsitsikamma Forest Nat. Park. [Holotype: MZLU]

*L. rugosa* (Guérin, 1838)

*Phalangium rugosum* Guérin, 1838

*Larifuga rugosa*: Pocock 1902a

RSA (Cape Prov.): 'Cape of the Good Hope'. [Holotype: BMNH]. Systematic position doubtful.

*L. weberi* Loman, 1898\*

*Larifuga weberi*: Lawrence 1931 (2), Staręga 1989b (3)

RSA (Cape Prov.): Knysna (1, 2, 3), Diepwalle Forest Stat. (3), Krantzhoek (3), George (1). [Types: ZMAN]

*Larifugella* Lawrence, 1933*L. afra* Lawrence, 1933\*

RSA (Natal): Vernon Crookes Nature Reserve (NCAP 86/617), Port Shepstone (Lawrence 1938a), Margate (NMSA 2796), Port Edward (1). Transkei: Port St Johns (NMSA 1114). [Types: NMSA]

*L. longipalpis* Lawrence, 1934

RSA (Cape Prov.): Van Staden's River nr Port Elizabeth. [Holotype: SAMC]

*L. natalensis* (Lawrence, 1931)

*Adaeulum natalense* Lawrence, 1931

*Larifugella natalensis*: Lawrence 1933, 1938b (2), Kauri 1950 (3), 1961 (4)

RSA (Natal): Royal Natal Nat. Park (4), Cathkin Peak (NMSA 2850, 2861, 14790), Champagne Castle Hotel (NMSA 4080, 4088, 6124), Giant's Castle Game Reserve (NMSA 2780), Rosetta (NMSA 2871), Fort Nottingham (NMSA 6048, 6068), Umgeni Poort (NMSA 873), Dargle (NMSA 2866, 2869, 4099), Kranskop (NMSA 2843, 6054, 6087), Mazongwaan Forest (NMSA 2838), York (NMSA 2798), Karkloof Falls Nature Reserve (3), Rockwood Farm (NMSA 14306), Pietermaritzburg (1, 2), Swartkop (NMSA 6126), Table Mt nr Pietermaritzburg (NMSA 26), Richmond (NMSA 6084, 7651). [Types: NMSA\*, SAMC, SMF]

*L. valida* Lawrence, 1963

RSA (Transvaal): Mariepskop (1), Graskop (1), Long Tom State Forest (NMSA 15457), Barberton (1). [Types: NMSA]

*L. zuluana* Lawrence, 1937a

RSA (Natal): Kosi Bay Nature Reserve (1), Richards Bay (NMSA 4066), Nkandla Forest Reserve (1), Qudeni Forest (NMSA 4152), Eshowe (NMSA 2), Kranskop (NMSA 2823), Gillitts-Emberton (NMSA 6101). [Types: NMSA]

*Micradaeum* Lawrence, 1931*M. rugosum* Lawrence, 1931\*

RSA (Cape Prov.): Table Mt nr Cape Town (several localities). [Types: SAMC, SMF]

*Montadaeum* Lawrence, 1931*M. purcelli* Lawrence, 1931\*

RSA (Cape Prov.): Bergvliet (1), Table Mt nr Cape Town (Kauri 1961). [Types: SAMC, SMF]

*Paradaeum* Lawrence, 1931*P. rattrayi* Lawrence, 1931\*

RSA (Cape Prov.): Hogsback (1), Kologha Forest (NMSA 8401). [Types: NMSA, SMF]

## Triaenonychinae

*Acumontia* Loman, 1898*A. alluaudi* (Roewer, 1914), **comb. n.**

*Triacumontia alluaudi* Roewer, 1914; 1931 (2), Lawrence 1959 (3)

Madagascar: Tanala Forest (1, 2), Sahana Forest (2), Brickaville (3), Farafangana (3). [Types: MNHN, SMF]

*A. armata* Loman, 1898\*

*Acumontia lomani* Roewer, 1914 (2); Lawrence 1959 (5), **syn. n.**  
*Spinimontia lomani* Roewer, 1914 (3); Lawrence 1959 (6), **syn. n.**  
*Triacumontia lomani* Roewer, 1914 (4); Lawrence 1959 (7), **syn. n.**

Madagascar: Antananarivo (1), Tanala Forest (3), Manjakandriana (6, 7), Ambatofitorahana (5), Moramanga (5), Ambatolampy (6), Manjakatempo (6), Andingitra (6), Mont d'Ambre (5), loc. ? (2, 4). [Types: *armata* ZMUC; *A. lomani* - ZMHB\*; *S. lomani* - ZMHB\*, SMF\*; *T. lomani* - ZMHB\*]

*A. capitata* (Lawrence, 1959), **comb. n.**

*Spinimontia capitata* Lawrence, 1959

Madagascar: Forêt Vakoana, Forêt d'Ampatsikahitra, Mt Tsaratanana. [Types: MNHN]

*A. cowani* Pocock, 1903

*Acumontia rostrata* var. *cowani* Pocock, 1903

*Triacumontia cowani*: Roewer 1914, Lawrence 1959 (2)

Madagascar: Betsileo (1), Moramanga (2). [Types: BMNH]

*A. draconensis* Lawrence, 1939

RSA (Natal): Little Tugela (NMSA 1828), Cathkin Peak Forest Reserve (1), Champagne Castle Hotel (NMSA 4085, 4089), Giant's Castle Game Reserve (NMSA 2777, 2783). [Types: NMSA\*]

Belongs to an as yet undescribed genus.

*A. echinata* Pocock, 1903

*Triacumontia echinata*: Roewer 1914

Madagascar: Ambohitombo. [Types: BMNH]

*A. flavispina* (Lawrence, 1959), **comb. n.**

*Tanalaius flavispinus* Lawrence, 1959

Madagascar: Maroantsetra. [Holotype: MHHN]

*A. hispida* (Roewer, 1914), **comb. n.**

*Triacumontia hispida* Roewer, 1914

Madagascar: Tanala Forest (1), Moramanga (SMF 305/4, C. F. Roewer det.). [Holotype: SMF\*]

*A. horida* (Roewer, 1914), **comb. n.**

*Triacumontia horrida* Roewer, 1914

*Triacumontia horrida*: Lawrence 1959

Madagascar: Tanala, loc. ? [Holotype: SMF\*]

*A. hystrix* (Lawrence, 1959), **comb. n.**

*Tanalaius hystrix* Lawrence, 1959

Madagascar: Brickaville. [Holotype: MNHN]

*A. longipes* Lawrence, 1959

Madagascar: Maroantsetra. [Holotype: MNHN]

*A. majori* Pocock, 1902a

Madagascar: Ambohitombo. [Holotype: BMNH]

*A. milloti* (Lawrence, 1959), **comb. n.**

*Tanalaius milloti* Lawrence, 1959

Madagascar: Mt Ivohibe, Ampasy. [Types: MNHN]

*A. natalensis* Lawrence, 1931*Acumontia natalensis*: Lawrence 1933 (2), Kauri 1950 (3)RSA (Natal): Pietermaritzburg (1, 2, 3), World's View (NMSA 1029), Shooters Hill (NMSA 1084, 1819), Swartkop (NMSA 55), Richmond (NMSA 7650). [Holotype: SAMC\*]  
Belongs to the same undescribed genus as *A. draconensis*.*A. nigra* (Lawrence, 1959), **comb. n.***Triacumontia nigra* Lawrence, 1959*Triacumontia nigra perinetensis* Lawrence, 1959 (2), **syn. n.**Madagascar: Moramanga (1), Perinet (1, 2). [Types: *nigra* – MNHN; *perinetensis* – MNHN]*A. pococki* Roewer, 1914*Tanalaius alluaudi* Roewer, 1914 (2); 1931 (3), **syn. n.**Madagascar: Tanala Forest (2, 3), loc. ? (1). [Types: *pococki* – ZMHB\*; *alluaudi* – MNHN, SMF\*]*A. remyi* (Roewer, 1949)*Bezavonia remyi* Roewer, 1949b*Acumontia remyi*: Lawrence 1959

Madagascar: Fort de Dauphin. [Holotype: SMF]

*A. roberti* Pocock, 1903*Acumontia roberti*: Lawrence 1959 (2)

Madagascar: Ambohitombo (1), Mt Ankaratra (2), Farafangana (2). [Holotype: BMNH]

*A. roeweri* **nom. n.***Triacumontia pococki* Roewer, 1914 nec *Acumontia pococki* Roewer, 1914*Triacumontia pococki*: Lawrence 1959 (2)

Madagascar: Moramanga (2), Manabato sur l'Anove (2), Brickaville (2), loc. ? (1). [Holotype: SMF]

*A. rostrata* Pocock, 1902a*Triacumontia rostrata* Roewer, 1914

Madagascar: Ambohitombo. [Holotype: BMNH]

*A. soerenseni* (Roewer, 1914), **comb. n.***Triacumontia soerenseni* Roewer, 1914

Madagascar: loc. ? [Holotype: ZMHB\*]

*A. spinifrons* (Roewer, 1914), **comb. n.***Triacumontia spinifrons* Roewer, 1914*Triacumontia centralis* Lawrence, 1959 (2), **syn. n.**Madagascar: Manjakandriana (2), loc. ? (1). [Types: *spinifrons* (Holotype) – ZMHB\*; *centralis* – MNHN]*A. venator* (Roewer, 1931), **comb. n.***Triacumontia venator* Roewer, 1931; Lawrence 1959 (2)

Madagascar: Moramanga (1), Andevoranto (2). [Holotype: SMF]

*Amatola* Lawrence, 1931*A. armata* (Lawrence, 1938), **comb. n.***Cryptobunus armatus* Lawrence, 1938a

RSA (Natal): Bulwer (1), Lundy's Hill (NMSA 4120). [Types: NMSA\*]

*A. dentifrons* Lawrence, 1931\**Amatola dentifrons*: Lawrence 1938a (2)

RSA (Cape Prov.): Hogsback (1), Kologha Forest (NMSA 8404), East London (2). Ciskei: Pirie Forest nr Bisho (2). [Types: SAMC\*]

*A. durbanica* (Lawrence, 1937), **comb. n.***Cryptobunus durbanicus* Lawrence, 1937a; 1938a (2), 1947a (3)

RSA (Natal): Table Mt nr Pietermaritzburg (NMSA 2814), Drummond (NMSA 14278), Shongweni Dam (2), Pinetown (3), Durban (1), Scottburgh (NMSA 2821), Park Rynie (NMSA 1847, 2832), Kelso (NMSA 14294), Margate (NMSA 4071), Port Edward (NMSA 1882, 4070, 4075). [Types: NMSA\*]

*A. maritima* (Lawrence, 1937), **comb. n.***Cryptobunus maritimus* Lawrence, 1937a; 1938a (2)

RSA (Natal): Hluhluwe Game Reserve (NMSA 2851), Ngome Forest (NMSA 7671), Dlinza Forest (NMSA 14291), Nkandla Forest Reserve (2), Qudeni Forest (NMSA 4157), Compensation Beach (1), Sheffield Beach (NMSA 1073, 6131), Umhlali Beach (NMSA 7680, 8385), Gillitts-Emberton (NMSA 6106), Mtunzini (NMSA 14290), Kranskop (NMSA 14281), Mazongwaan Forest (NMSA 2839), Greytown (NMSA 8447). [Types: NMSA\*]

*A. setifemur* (Lawrence, 1931), **comb. n.***Cryptobunus setifemur* Lawrence, 1931; 1933 (2), 1938a (4)*Cryptobunus silvicolus* Lawrence, 1937a (3); 1938b (5), **syn. n.**RSA (Natal): Champagne Castle Hotel (NMSA 6099, 14272, 14276, 14791), Cathkin Peak (NMSA 1832, 2847, 4063, 4104), Giant's Castle Game Reserve (NMSA 2778, 14275), Estcourt (NMSA 1818), Rosetta (NMSA 2870), Balgowan (NMSA 1111), Fort Nottingham (NMSA 6069), Karkloof Falls Nature Reserve (3), Hilton (NMSA 4148), Shooters Hill (NMSA 1820), Pietermaritzburg (1, 2, 4, 5), Swartkop (NMSA 14280). [Types: *setifemur* (holotype) – SAMC\*; *silvicolus* – NMSA\*]*A. unidentata* (Lawrence, 1937), **comb. n.***Cryptobunus unidentatus* Lawrence, 1937a

RSA (Natal): Impendle (NMSA 14282), Umkomazi River nr Bulwer (1), Richmond (NMSA 6083), Ingeli Forest nr Kokstad (NMSA 7648). [Types: NMSA\*]

*Ankaratrix* Lawrence, 1959*A. cancrops* Lawrence, 1959

Madagascar: Mt Andohahelo. [Holotype: MNHN]

*A. illota* Lawrence, 1959\*

Madagascar: Ankaratra, Ambalavao. [Types: MNHN]

*Antongila* Roewer, 1931*A. spinigera* Roewer, 1931\*

Madagascar: Bai d'Antongil. [Types: MNHN, SMF]

*Austromontia* Lawrence, 1931*A. bidentata* Lawrence, 1934*Austromontia bidentata* Kauri 1961 (2)

RSA (Cape Prov.): Jonkershoekberge nr Stellenbosch (1, 2), Kleinmond (SAMC). [Holotype: SAMC]

*A. caledonica* Lawrence, 1931

RSA (Cape Prov.): Caledon (1), Riviersonderend (SAMC), Swellendam (NMSA 14480).  
[Holotype: SAMC]

*A. capensis* Lawrence, 1931

RSA (Cape Prov.): Table Mt nr Cape Town, St James, Newlands. [Types: SAMC]

*A. formosa* Lawrence, 1963

RSA (Transvaal): Hanglip Forest nr Louis Trichardt. [Types: NMSA, TMSA]

*A. litoralis* Lawrence, 1934

RSA (Cape Prov.): Hermanus. [Holotype: SAMC]

*A. silvatica* Lawrence, 1931\*

RSA (Cape Prov.): Knysna (1), Stormsriviermond (NMSA 7666). [Types: SAMC, SMF]

*Austronuncia* Lawrence, 1931*A. leleupi* Lawrence, 1963

RSA (Transvaal): Hanglip Forest nr Louis Trichardt. [Types: NMSA, TMSA]

*A. spinipalpis* Lawrence, 1931\*

RSA (Cape Prov.): Knysna (1), Diepwalle Forest Station (NMSA 14262). [Types: SAMC]

*Biacumontia* Lawrence, 1931*B. cornuta* Lawrence, 1931

RSA (Cape Prov.): Knysna. [Types: SAMC]

*B. elata* Kauri, 1961

RSA (Cape Prov.): Van Stadenspas nr Port Elizabeth. [Holotype: MZLU]

*B. fissidens* Lawrence, 1931

RSA (Cape Prov.): East London. [Holotype: SAMC]

*B. maculata* Lawrence, 1938a

RSA (Natal): Port Shepstone. [Types: NMSA]

*B. paucidens* Lawrence, 1931\*

RSA (Cape Prov.): Olifantskop in Suurberge Mts (NMSA 8396), Grahamstown (1), Cold Springs (NMSA 14486), Port Alfred (NMSA 14487). [Types: NMSA]

*B. truncatidens* Lawrence, 1931

RSA (Cape Prov.): Olifantskop in Suurberge Mts (NMSA 8395), Alicedale (1), Grahamstown (NMSA 14489, 14491), Cold Springs (NMSA 14493), Kenton on Sea (NMSA 14492), Cowie River (NMSA 14494), Port Alfred (NMSA 14495), Hogsback (NMSA 14490). [Types: NMSA]

*B. variegata* Lawrence, 1934

RSA (Cape Prov.): Knysna (NMSA 1873), Keurboomsrivier (1). [Holotype: SAMC]

*Ceratontia* Roewer, 1914*C. annae* Lawrence, 1934

RSA (Cape Prov.): Jonkershoekberge nr Stellenbosch. [Holotype: SAMC]

*C. capensis* Roewer, 1914\*

RSA (Cape Prov.): Olifantskop in Suurberge Mts (NMSA 8397), Port Elizabeth (1), Alexandria Forest (NMSA 14292), Boesmansriviermond (NMSA 14496), East London (NCAP 77/1096, 81/501). [Types: SMF\*]

*C. cheliplus* Roewer, 1931

*Ceratontia hewitti* Lawrence, 1931 (2), **syn. n.**

RSA (Cape Prov.): Alicedale (2), Pearston (NMSA 8393), Grahamstown (1), Alexandria Forest (NMSA 8435), Port Alfred (NMSA 14502). [Types: *cheliplus* – SMF\*, NMSA\*; *hewitti* – NMSA\*]

*C. fluvialis* Lawrence, 1931

RSA (Cape Prov.): Riversdale Mts. [Holotype: SAMC]

*C. irregularis* Lawrence, 1931

RSA (Cape Prov.): Grahamstown. [Holotype: NMSA\*]

*C. karoensis* Lawrence, 1931

RSA (Cape Prov.): Montagu (1), Ashton (SAMC). [Holotype: SAMC]

*C. minor* Lawrence, 1931

RSA (Cape Prov.): Caledon (on the original label; in the description: East London) (1), Steenbras Dam nr Somerset West (Kauri 1961). [Holotype: SAMC]

*C. namaqua* Lawrence, 1934

RSA (Cape Prov.): Leliefontein. [Holotype: SAMC]

*C. nasuta* Lawrence, 1934

RSA (Cape Prov.): Franschhoek (1), Jonkershoekberge nr Stellenbosch (SAMC). [Types: SAMC]

*C. pusilla* Lawrence, 1934

RSA (Cape Prov.): Grahamstown. [Types: SAMC, NMSA\*]

*C. reticulata* Lawrence, 1934

RSA (Cape Prov.): Port Alfred (NMSA 14507), Hogsback (1), Kologha Forest (NMSA 8407). [Types: SAMC]

*C. rumpiana* Lawrence, 1937a

RSA (Natal): Umkomazi River nr Bulwer. [Types: NMSA\*]

*C. ruricola* Lawrence, 1934

RSA (Cape Prov.): Hawequas nr Wellington (TMSA 15587), Jonkershoekberge nr Stellenbosch (1). [Holotype: SAMC]

*C. sanguinea* Lawrence, 1934

RSA (Cape Prov.): 'Montagu Pass (George)'. [Types: SAMC]

*C. setosa* Lawrence, 1931

RSA (Natal): Port Shepstone (Lawrence 1938a). Transkei: Goqwana (1) and Somerville (NMSA 14509) nr Tsolo, Port St Johns (NMSA 1120), Qolora Mouth (NMSA 8387). [Types: NMSA\*]

*C. tabulae* Lawrence, 1931

*Ceratontia tabulae*: Kauri 1961 (2)

RSA (Cape Prov.): Cape Point (2), Simon's Town (1), St James (1), Table Mt nr Cape Town (1), Newlands (1), Hout Bay (1), Kalk Bay (1). Doubtful locality: Bains Kloof nr Wellington (2). [Types: SAMC]

*C. thornei* Lawrence, 1934

*Ceratomontia thorni* Lawrence, 1934 [ICZN, Art. 31a]

RSA (Cape Prov.): Meiringspoort in Groot-Swartberge Mts. [Holotype: SAMC]

*C. weneri* Roewer, 1931

Namibia: Windhoek (1) – impossible! RSA (Cape Prov.): Grahamstown (NMSA 7686), Alexandria Forest (NMSA 14293). [Holotype: SMF\*]

An examination of the holotype (SMF 1296/38 – ♀) and its comparison with the series NMSA 7686 (3 ♀) revealed their identity. The compared series, however, originates from Grahamstown, which is in the centre of the genus range and not so entirely isolated as is Windhoek.

*Decarynella* Fage, 1945*D. gracilipes* Fage, 1945\*

Madagascar: Namoroka (1), Ambovonomby (Lawrence 1959). [Types: MNHN]

*Flavonuncia* Lawrence, 1959*F. pupilla* Lawrence, 1959\*

Madagascar: Mt Ankaratra, Nosiarivo, Tananarive, Perinet, Mt Andohahela. [Types: MNHN]

*Graemontia* Lawrence, 1931*G. bicornigera* Lawrence, 1963

RSA (Transvaal): Louis Trichardt, Mariepskop. [Types: NMSA]

*G. bifidens* Lawrence, 1931\*

RSA (Cape Prov.): Grahamstown (1), Alexandria Forest (NMSA 8436), Port Alfred (NMSA 14516). [Types: NMSA]

*G. decorata* Lawrence, 1938a

RSA (Orange F. S.): Van Reenen. [Types: NMSA]

*G. denticelis* Lawrence, 1931

RSA (Cape Prov.): Olifantskop in Suurberge Mts (NMSA 8399), Hogsback (1), Kologha Forest (NMSA 8406). Ciskei: Pirie Forest nr Bisho (Lawrence 1938a, 1963). [Holotype: NMSA]

*G. erecta* Kauri, 1961

RSA (Cape Prov.): Table Mt nr Cape Town. [Holotype: MZLU]

*G. natalensis* Lawrence, 1937a

*Graemontia natalensis* Lawrence, 1938a (2), 1963 (3)

RSA (Natal): Umgeni Poort (1), Rockwood Farm (NMSA 14307), Shooters Hill (2), Otto's Bluff (3), Bulwer (3), Ingeli Forest nr Kokstad (NMSA 4102). [Types: NMSA]

*Gunvoria* Kauri, 1961*G. spatulata* Kauri, 1961\*

RSA (Cape Prov.): Table Mt nr Cape Town [Holotype: MZLU]

*Hovanuncia* Lawrence, 1959*H. bidentata* Lawrence, 1959

Madagascar: Andohahela. [Holotype: MNHN]



*H. monticola* Lawrence, 1959\*

Madagascar: Mt Ankaratra, Forêt d'Ambahona, Nosiarivo, Tsiafajavona, Mt d'Ambre.  
[Types: MNHN]

*Ivohibe* Lawrence, 1959*I. cavernicola* Lawrence, 1959\*

Madagascar: Mt Ivohibe, Andringitra. [Types: MNHN]

*Lawrencella* Strand, 1932*L. inermis* (Lawrence, 1931)\*

*Roeweria inermis* Lawrence, 1931

*Lawrencella inermis* Lawrence 1934 (2)

RSA (Cape Prov.): Newlands (1), Camps Bay (2). [Holotype: SAMC]

*Lispomontia* Lawrence, 1937a*L. coxidens* Lawrence, 1937a\*

*Lispomontia coxidens*: Lawrence 1938a (2)

RSA (Natal): Umgeni Poort (1), Benvie (NMSA 14289), Balgowan (2), Pietermaritzburg – Town Bush (2), Sweet Waters (NMSA 864), Swartkop (NMSA 14279), Table Mt nr Pietermaritzburg (NMSA 14270), Bulwer (NMSA 4114). [Types: NMSA\*]

*Mensamontia* Lawrence, 1931*M. melanophora* Lawrence, 1931

RSA (Cape Prov.): Houhoek (SAMC), Hermanus (SAMC), Bredasdorp (1), Caledon (SAMC), Riviersonderend (SAMC), Ashton (SAMC). [Types: SAMC]

*M. morulifera* Lawrence, 1931\*

RSA (Cape Prov.): Table Mt nr Cape Town (1), Jonkershoekberge nr Stellenbosch (SAMC), Sir Lowry's Pass (1), Hermanus (SAMC). [Types: SAMC]

*Micromontia* Lawrence, 1939*M. flava* Lawrence, 1939\*

RSA (Natal): Little Tugela (NMSA 2836), Cathkin Peak Forest Reserve (1). [Types: NMSA]

*Millomontia* Lawrence, 1959*M. brevispina* Lawrence, 1959\*

Madagascar: Ivohibe. [Holotype: MNHN]

*M. vadoni* Lawrence, 1959

Madagascar: Troisième Reserve Naturelle. [Holotype: MNHN]

*Millotonyx* Lawrence, 1959*M. tenuipes* Lawrence, 1959\*

Madagascar: Mt Ankaratra. [Types: MNHN]

*Monomontia* Lawrence, 1931*M. aquilonaris* Lawrence, 1963

RSA (Transvaal): Louis Trichardt, Hanglip Forest. [Types: NMSA]

*M. aspera* Lawrence, 1939

RSA (Natal): Cathkin Peak Forest Reserve. [Types: NMSA]

*M. atra* Lawrence, 1931\*

RSA (Cape Prov.): Hogsback. [Holotype: NMSA]

*M. brincki* Kauri, 1961

RSA (Cape Prov.): Moshesh's Ford nr Barkly East. [Holotype: MZLU]

*M. corticola* Lawrence, 1938a

RSA (Natal): Middeldrift (NMSA 2828), Kranskop (NMSA 2791, 2825, 2844), York (NMSA 2802), Nkandla Forest Reserve (1), Durban (Kauri 1961). [Types: NMSA]

*M. cristiceps* Lawrence, 1963

RSA (Transvaal): Magoebaskloof (1), Malta Forest (NMSA 7638), Mariepskop (1). [Types: NMSA]

*M. curvirostris* Lawrence, 1938a

RSA (Natal): Kranskop (NMSA 2792), Nkandla Forest Reserve (1). [Types: NMSA]

*M. flava* Lawrence, 1933

RSA (Natal): Giant's Castle Game Reserve (NMSA 2779), Karkloof Falls Nature Reserve (NMSA 1095), Shooters Hill (NMSA 822, 1086), Pietermaritzburg (1), World's View (NMSA 51), Sweet Waters (NMSA 877, 1027, 1825), Swartkop (NMSA 56), Drummond (NMSA 2785), Amanzimtoti (NMSA 2828), Margate (NMSA 2795). [Types: NMSA]

*M. granifrons* Lawrence, 1938a

RSA (Natal): Port Shepstone (1). Transkei: Port St Johns (NMSA 1851). [Holotype: NMSA]

*M. intermedia* Lawrence, 1938a

RSA (Orange F. S.): Van Reenen. [Types: NMSA]

*M. krausi* Kauri, 1961

RSA (Cape Prov.): Table Mt nr Cape Town. [Holotype: MZLU]

*M. lawrencei* Kauri, 1950

RSA (Natal): Karkloof Falls Nature Reserve (1), Durban (Kauri 1961), Weza State Forest (NMSA 14766). [Holotype: MZLU]

*M. montensis* Lawrence, 1938a

RSA (Orange F. S.): Van Reenen. [Types: NMSA]

*M. rattrayi* Lawrence, 1931

RSA (Cape Prov.): East London (1). Ciskei: Pirie Forest nr Bisho (Lawrence 1938a). [Types: SAMC]

*M. rugosa* Lawrence, 1937a

RSA (Natal): Hluhluwe Game Reserve (1), St Lucia Park (TMSA 15359), Mtubatuba (TMSA 15351), Dlinza Nature Reserve (NMSA 15453). Doubtful locality - RSA (Transvaal): Skeerpoort nr Pretoria (Kauri 1961). [Types: NMSA]

*M. transvaalica* Lawrence, 1963

RSA (Transvaal): Mariepskop. [Types: NMSA]

*M. versicolor* Lawrence, 1963

RSA (Transvaal): Hanglip Forest, Louis Trichardt, Entabeni, Woodbush Forest, Mariepskop. [Types: NMSA]

*Paramontia* Lawrence, 1934*P. infinita* Lawrence, 1934

RSA (Cape Prov.): Hottentot Hollands Mts (SAMC), Riviersonderend (1), Tradouw Pass nr Heidelberg (SAMC). [Types: SAMC]

*P. lisposoma* (Lawrence, 1931)\*

*Rostrumontia lisposoma* Lawrence, 1931

*Paramontia lisposoma*: Lawrence 1934, Kauri 1961 (2)

RSA (Cape Prov.): Newlands (1), Constantia (1), Table Mt nr Cape Town (2), Hottentots Hollandsberge (1), Steenbras Dam nr Somerset West (2), Riviersonderend (1), Swellendam (1), Maanskynkop nr Hermanus (2). [Types: SAMC]

*Paulianyx* Lawrence, 1959*P. brevipes* Lawrence, 1959\*

Madagascar: Forêt de Magidy, Tananarive, Manjakandriana, Ambalavao. [Types: MNHN]

*P. ferruginea* Lawrence, 1959

Madagascar: Ambatolampy. [Holotype: MNHN]

*Planimontia* Kauri, 1961*P. goodnightorum* Kauri, 1961\*

*Planimontia goodnighti* Kauri, 1961 [ICZN, Art. 31a, 32c, 32d]

RSA (Cape Prov.): Table Mt nr Cape Town, Hout Bay [Types: MZLU]

*Roewerania* Lawrence 1934*R. guduana* Kauri, 1961

RSA (Natal): Royal Natal Nat. Park. [Holotype: MZLU]

*R. lignicola* Lawrence, 1934\*

RSA (Cape Prov.): Hogsback. [Types: SAMC]

*R. montana* Kauri, 1961

RSA (Natal): Royal Natal Nat. Park. [Holotype: MZLU]

*R. spinosa* Lawrence, 1938a

RSA (Orange F. S): Van Reenen (1); (Natal): Champagne Castle Hotel (NMSA 14273), Cathkin Peak Forest Reserve (Lawrence 1939). [Types: NMSA]

*Rostrumontia* Lawrence, 1931*R. capensis* Lawrence, 1931

*Rostrumontia capensis*: Kauri 1961 (2)

RSA (Cape Prov.): Cape Town (NMSA 14525), Table Mt nr Cape Town (1, 2), Newlands (1), St James (SAMC), Simon's Town (SAMC). [Types: SAMC]

*R. granulifera* Lawrence, 1931*Rostrumontia granulifer* Lawrence, 1931 [ICZN, Art. 31c, 32c]

RSA (Cape Prov.): Table Mt nr Cape Town, Kalkbaai, Newlands. [Types: SAMC]

*R. truncata* Lawrence, 1931\*

RSA (Cape Prov.): Wit River nr Wellington. [Types: SAMC]

*Speleomontia* Lawrence, 1931*S. cavernicola* Lawrence, 1931\*

RSA (Cape Prov.): Wynberg Caves in Table Mt nr Cape Town. [Types: NMSA, SAMC]

*Yulella* Lawrence, 1939*Y. natalensis* (Lawrence, 1937)\**Roewerania natalensis* Lawrence, 1937a*Yulella natalensis*: Lawrence 1939 (2)

RSA (Natal): Cathkin Peak Forest Reserve (2), Pietermaritzburg – Town Bush (NMSA 1060), Sweet Waters (NMSA 881), Umkomazi River nr Bulwer (1). [Types: NMSA]

## ‘Phalangodidae’

The African genera assigned to this family-complex belong to an undescribed family.

*Aburiplus* Roewer, 1949a*A. trochanteralis* Roewer, 1949a

Ghana: Aburi. [Holotype: SMF]

*Conomma* Loman, 1902*C. aspera* Lawrence, 1949*Conomma asper* Lawrence, 1949; 1951 (2), 1957b (3) [ICZN, Art. 31c, 32c]

Angola: vicinity of Dundo (1, 2, 3). [Holotype: MNHN]

*C. biarmata* Roewer 1949*Conomma biarmatum* Roewer, 1949a; 1958 (2) [ICZN, Art. 31c, 32c]

Ivory Coast: Mt Nimba (2). Ghana: Aburi (1). [Holotype: SMF]

*C. cassinia* Roewer, 1949*Conomma cassinium* Roewer, 1949a [ICZN, Art. 31c, 32c]

Guinea-Bissau: Rio Cassini. [Types: SMF]

*C. dentichelis* Lawrence, 1957a

Zaire: Maniema. [Types: MRAC]

*C. ealae* Roewer, 1950

Zaire: Eala. [Types: MRAC, SMF]

*C. feai* Roewer, 1927*Conomma feae* Roewer, 1927 [ICZN, Art. 31a]

Isl. Príncipe: Infante D. Henrique. [Types: SMF\*]

*C. fortis* Loman, 1902\*

*Conomma fortis*: Roewer 1912 (2), 1923 (3), 1927 (4)

Guinea-Bissau: Rio Cassini (4). Ivory Coast: Bourukru (2). Ghana: Sekondi (3), Aburi (SMF 8968/225). Togo: loc. ? (SMF 11037/248). Cameroon: Johann Albrechts-Höhe (1). Isl. Bioko: Basilé, B. Oeste, Musola (4). Isl. Principé: Infante D. Henrique (4). Isl. Annobom (4). [Holotype: ZMHB\*]

*C. fuscipes* Kauri, 1985

Zaire: Kwenga River [Types: MRAC]

*C. harpago* Roewer, 1949a

Ghana: Aburi. [Types: SMF]

*C. minima* Roewer, 1912

*Conomma minima*: Roewer 1927 (2), 1943 (3), Lawrence 1947b (4)

Guinea-Bissau: Rio Cassini (2), Bolama (2). Ivory Coast: Le Banco (4). Togo: Misahöhe (1), Yequé (ZMHB 11501). Cameroon: Buea (2). Isl. Bioko: Basilé (2), loc. ? (3). Isl. Annobom (2). [Types: SMF\*]

*C. oedipus* Roewer, 1949a

Isl. Bioko: loc. ? [Holotype: SMF]

*C. orientalis* Roewer, 1949

*Conomma orientale* Roewer, 1949a

*Conomma orientalis*: Roewer, 1961a (2)

Zaire: Bunia (2). Tanzania: Moshi (1). [Types: SMF]

*C. pachytarsus* Roewer, 1949a

Ghana: Aburi. [Types: SMF]

*C. palmeni* Kauri, 1985

Zaire: source of Kikoli River, Kwenga River, Lutshima. [Types: MRAC]

*C. princeps* Roewer, 1949

*Conomma princeps* Roewer, 1949a [ICZN, Art. 31c, 32c]

*Conomma annobomum* Roewer, 1949a (2); 1958 (3), **syn. n.**

Ivory Coast: Mt Nimba (3). Isl. Principé (1). Isl. Annobom (2). [Types: *princeps* – SMF\*; *annobomum* – SMF\*]

*C. pygata* Roewer, 1949

*Conomma pygatum* Roewer, 1949a [ICZN, Art. 31c, 32c]

Cameroon: Maru Mts. [Types: SMF]

*C. simplex* Roewer, 1949a

Ghana: Aburi. [Holotype: SMF]

*C. troglodytes* Lawrence, 1952

Zaire: Thysville. [Types: MRAC]

*Kwangonia* Kauri, 1985*K. feshiensis* Kauri, 1985\*

Zaire: Feshi, Mwenga, Walikale, Kalehe. [Types: MRAC]

*Metaconomma* Kauri, 1985*M. dentipes* Kauri, 1985\*

Zaire: Kianza. [Holotype: MRAC]

*Micronimba* Roewer, 1953*M. bicurvata* Roewer, 1953\**Micronimba bicurvata*: Roewer 1958 (2), 1959 (3)

Ivory Coast: Mt Nimba (1, 2, 3). [Types: MNHN ?]

*M. concolor* Roewer, 1953*Micronimba concolor*: Roewer 1958 (2), 1959 (3)

Ivory Coast: Mt Nimba (2, 3), Mt Tonkoui (1). [Types: MNHN ?]

*M. femoralis* Roewer, 1958*Micronimba femoralis*: Roewer 1959 (2)

Ivory Coast: Mt Nimba (1, 2). [Types: MNHN ?]

*M. pulchella* Roewer, 1958*Micronimba pulchella*: Roewer 1959 (2)

Ivory Coast: Mt Nimba (1, 2). [Types: MNHN ?]

*Nimbodus* Roewer, 1953*N. femoralis* Roewer, 1953\*

Ivory Coast: Mt Nimba. [Types: MNHN ?]

*Opconomma* Roewer, 1927*O. hirsuta* Roewer, 1927\*

Isl. São Tomé: Vista Allegre, Ribeira Palma. [Types: SMF, MCSN]

*Opconommula* Roewer, 1949a*O. spinosa* (Roewer, 1927)\**Opconomma spinosa* Roewer, 1927

Cameroon: Bibundi. [Holotype: SMF]

*Phalangodes* Tellkamp, 1844*P. ? nanus* Hirst, 1913

Seychelles: Mahé. [Holotype: BMNH].

Systematic position doubtful but certainly not a *Phalangodes*.*Proconomma* Roewer, 1961a*P. crassipalpis* Kauri, 1985

Zaire: Mulunge. [Holotype: MRAC]

*P. kahuzi* Roewer, 1961a\**Proconomma kahuzi*: Kauri 1985 (2)

Zaire: Kabare (1), Mulunga (2), betw. Katobo and Kakololo (2). [Types: MRAC, SMF]

*Pyramidops* Loman, 1902*P. aelleni* Lawrence, 1958

Gabon: Pahu nr Lastoursville. [Holotype: MHNG]

- P. albimana* Roewer, 1927  
Isl. Bioko: Basilé. [Types: MCSN ?]
- P. biseriata* Roewer, 1949a  
Isl. Bioko: loc. ? [Holotype: SMF]
- P. congonis* Roewer, 1949a  
Zaire: Kinshasa. [Holotype: SMF]
- P. globipes* Roewer, 1927  
Ghana: Aburi (SMF 1556/55). Cameroon: Bibundi (1). [Holotype: SMF]
- P. kolombina* Kauri, 1985  
Zaire: Kwanga. [Types: MRAC]
- P. major* Roewer, 1949a  
Cameroon: loc. ? (1). Zaire: Tshinada – Kapundu (Roewer 1950). [Types: SMF]
- P. pygmaea* Loman, 1902\*  
*Asopus pygmaea*: Roewer 1912  
Ghana: Aburi (SMF 1560/59). Togo: Yegué (1). [Types: ZMHB\*]
- P. raptator* (Sörensen, 1896)  
*Asopus raptator* Sörensen, 1896; Loman 1910 (2), Roewer 1912 (3)  
Cameroon: Bibundi (2), Japoma (3), Victoria (3), loc. ? (1). [Holotype: NHRS]
- P. schoutedeni* Lawrence, 1957a  
Zaire: Ilunga-Nhongolo Cave nr Gandajika. [Holotype: MRAC]
- P. venator* Roewer, 1927  
Cameroon: Edea. [Holotype: SMF]

*Skufia* Roewer, 1949a

- S. parva* Roewer, 1949a\*  
Togo: Misahöhe. [Holotype: SMF]

*Tonkouinatus* Roewer, 1953

- T. magnituber* Roewer, 1953\*  
Ivory Coast: Mt Tonkoui. [Holotype: MNHN ?]

Erecananidae

To date regarded as a subfamily of Phalangodidae, but as the structure of the genital apparatus is quite different, deserving family status.

*Erecanana* Strand, 1911

- E. defensa* Goodnight & Goodnight, 1959  
Kenya: Mombasa. [Types: UZIU, AMNH ?]
- E. dentipes* Kauri, 1985  
Zaire: Bendera. [Holotype: MRAC]
- E. insulana* Roewer, 1949b  
Isl. Réunion. [Holotype: SMF\*]

*E. lentiginosa* Lawrence, 1962

Tanzania: Bunduki. [Types: MRAC]

*E. mordax* (Sørensen, 1910)*Palpipes mordax* Sørensen, 1910*Palpipes horridus* Sørensen, 1910 (2), **syn. n.***Erecanana horridus*: Roewer, 1912*Erecanana mordax*: Roewer, 1913 (3)*Erecanana horrida*: Roewer, 1913 (4)Tanzania: Usambara (1, 2), Tanga (Kulumuzi Caves – 3, 4). [Types: *mordax* (holotype) – NHRS; *horridus* – NHRS]The differences between *E. mordax* and *E. horrida* (eg. Roewer 1923: 185) in the number of denticles on the first cheliceral segment is due to sexual dimorphism: ♂(*mordax*) has more and stronger denticles, ♀(*horrida*) – fewer and weaker (the distal ones hardly visible). [Rev.: SMF 271–3 ♂, 1247–1 ♂, 223–3 ♀]*E. quadridens* Lawrence, 1962

Tanzania: Uluguru Mts. [Holotype: MRAC]

*E. remyi* (Roewer, 1949), **comb. n.***Ambolotsca remyi* Roewer, 1949b*Ambolotsoa remyi*: Lawrence 1959

Madagascar: Nossi Bé. [Holotype: SMF\*]

*E. subinermis* Caporiacco, 1947

Kenya [or Tanzania]: Lake Jipe. [Holotype: HNHM]

*E. typus* (Sørensen, 1910)\**Palpipes typus* Sørensen, 1910*Erecanana bicolor* Roewer, 1915 (2), **syn. n.***Erecanana verrucosa* Roewer, 1949b (3), **syn. n.***Erecanana ruandana* Roewer, 1949b (4), **syn. n.***Erecanana chelispina* Roewer, 1950; (5) 1961a (6), Kauri 1985 (7), **syn. n.**Zaire: Rutshuru (5; Kauri 1985: Eala), Bunia (6), Kalehe (6), Kikutu (7). Rwanda: Kivu (SMF 13342/14), loc. ? (3, 4). Tanzania: Kilimanjaro (1, 2). [Types: *typus* – NHRS; *bicolor* (holotype) – SMF\*, *verrucosa* (holotype) – SMF\*; *ruandana* (holotype) – SMF\*; *chelispina* (holotype) – MRAC].The Roewer species listed above are conspecific with *E. typus*, the differences being due to sexual dimorphism and individual variation.

## Podoctidae

*Centrobunus* Loman, 1902*C. braueri* Loman, 1902\*

Seychelles: Mahé. [Holotype: ZMUH]

*Dimesoceras* Roewer, 1949b*D. lomani* (Hirst, 1911)\**Ibalonius lomani* Hirst, 1911*Mesoceras lomani*: Roewer 1912*Dimesoceras lomani*: Roewer 1949b

Seychelles: Silhouette. [Holotype: BMNH]



*Holozoster* Loman 1902*H. ovalis* Loman, 1902\*

Seychelles: Mahé. [Types: ZMUH, SMF]

*Ibaloniellus* Roewer, 1923*I. karschi* (Loman, 1902)\*

*Ibalonius karschi* Loman, 1902

*Paribalonius karschi*: Roewer 1912

*Ibaloniellus karschi*: Roewer 1923

Seychelles: Mahé. [Types: ZMUH, SMF]

*Ibalonius* Karsch, 1880*I. breoni* (Simon, 1879)

*Sitalces breoni* Simon, 1879

*Mesoceras breoni*: Roewer 1912

*Ibalonius breoni*: Suzuki 1977

Isl. Réunion. [Holotype: MNHN – lost ? (Roewer 1912)]

*Laponcea* Roewer, 1936*L. cippata* Roewer, 1936\*

Mauritius: Le Pouce. [Types: BMNH, SMF]

*Paribalonius* Roewer, 1912*P. inscriptus* (Loman, 1902)\*

*Ibalonius inscriptus* Loman, 1902; Hirst 1911 (3), 1913 (4).

*Ibalonius bimaculatus* Loman, 1902 (2)

*Paribalonius inscriptus*: Roewer 1912

*Paribalonius bimaculatus*: Roewer 1912

*Paribalonius bimaculatus bimaculatus*: Roewer 1923 (5)

*Paribalonius bimaculatus duplex* Roewer, 1923 (6), *syn. n.*

Seychelles: Mahé (1, 2, 3, 4, 5, 6), Praslin (3, 4), Silhouette (3, 4). [Types: *inscriptus* – ZMUH, SMF; *b. bimaculatus* – ZMUH, SMF; *b. duplex* – ZMUH]

*Peromona* Roewer, 1949b*P. erinacea* Roewer, 1949b\*

Seychelles: Mahé. [Holotype: SMF]

*Sitalces* Simon, 1879*S. novemtuberculatus* Simon, 1879\*

Isl. Réunion. [Holotype: MNHN – lost ? (Roewer 1912)]

*Sitalcicus* Roewer, 1923*S. gardineri* (Hirst, 1911)\*

*Sitalces gardineri* Hirst, 1911

*Sitalcicus gardineri*: Roewer 1923

Seychelles: Mahé. [Holotype: BMNH]

*Trimesoceras* Roewer, 1949b*T. flavopictum* (Hirst, 1911)\**Ibalonius flavopictus* Hirst, 1911*Mesoceras flavopictum*: Roewer 1912*Trimesoceras flavopictum*: Roewer 1949b

Seychelles: Mahé (Mare aux Cochons, Forêt Noire). [Types: BMNH]

*Tryssetus* Roewer, 1936*T. spinarmatus* Roewer, 1936\*

Mauritius: Le Pouce. [Types: BMNH, SMF]

## Zalmoxidae

Family status recently given by Staręga (1989a), all species previously listed as Phalangodinae.

*Bunofagea* Lawrence, 1959*B. gracilipes* Lawrence, 1959\*

Madagascar: Behara. [Types: MNHN]

*B. remyi* Lawrence, 1959

Madagascar: Ambatofinandrahana. [Types: MNHN]

*Metazalmoxis* Roewer, 1912*M. ferruginea* Roewer, 1912\*

Seychelles: loc. ? [Types: SMF\*]

*Remyus* Roewer, 1949b*R. gracillimus* Roewer, 1949b\*

Madagascar: Andranofotsikely, Fort Dauphin, Tongobory. [Types: SMF\*]

*Zalmoxomma* Roewer, 1949a*Z. occidentalis* Roewer, 1949a\*

Mauritius: Mont Cocotte (Staręga 1989a), loc. ? (1). [Types: SMF\*]

Assamiidae *s.l.**Abanatus* Roewer, 1950*A. beloti* Roewer, 1950\*

Zaire: Aba. [Holotype: MRAC]

*Aberdereca* Goodnight & Goodnight, 1959*A. parva* Goodnight & Goodnight, 1959\*

Kenya: Mt Aberdare. [Holotype: UZIU]

*Aburista* Roewer, 1935*A. termitarum* Roewer, 1935\*

Ghana: Aburi. [Holotype: SMF]

*Aburistella* Lawrence, 1947b*A. flava* Lawrence, 1947b

Ivory Coast: Le Banco. [Types: MNHN]

*Acaca* Roewer, 1935*A. albatra* Roewer, 1935\*

Ethiopia: Harar. [Types: SMF\*]

*A. liobuniformis* (Caporiacco, 1949), **comb. n.***Pseudoacaca liobuniformis* Caporiacco, 1949

Ethiopia: Jimma. [Types: MZUF ?]

*Acanthacaca* Roewer, 1952a*A. katumbea* Roewer, 1961b

Tanzania: Katumba. [Holotype: SMF]

*A. upembensis* Roewer, 1952a\*

Zaire: Upemba Nat. Park. [Types: MRAC, SMF]

*Acanthophrysella* Strand, 1911*A. pectinata* (Loman, 1902)\**Acanthophrys pectinata* Loman, 1902*Acanthophrysella pectinata*: Roewer 1912, 1923 (2)

Tanzania: Ukinga (1), Tanga (2). [Types: ZMHB\*]

*Adamauna* Roewer, 1935*A. maculatipes* Roewer, 1935\*

Cameroon: Adamaua. [Types: SMF]

*Afroassamia* Caporiacco, 1940*A. laevipes* Caporiacco, 1940\*

Ethiopia: Lake Abaya. [Holotype: MZUF ?]

*Allereca* Roewer, 1961a*A. ruandana* Roewer, 1961a\*

Rwanda: Rugege Rorest. [Holotype: MRAC]

*Amhara* Pavesi, 1897*A. grata* Pavesi, 1897\**Harsadia spinosa* Roewer, 1935 (2), **syn. n.***Amhara grata*: Caporiacco 1939 (3)Ethiopia: Giari Bule (1), Hora Harsadi (2), Javello (3), Neghelli (3), Moyale (3), Shoa (SMF 5835). [Types: *grata* (holotype) – MCSN\*; *spinosa* – SMF\*, BMNH]*A. nigrescens* (Roewer, 1935), **comb. n.***Argobba nigrescens* Roewer, 1935

Ethiopia: Argobba (1), Hora Harsadi (SMF 1236). [Holotype: SMF\*]

*Angolyppa* Lawrence 1957b*A. scabra* Lawrence 1957b\*

Angola: Lake Calundo. [Types: MNHN]

*Angopygoplus* Lawrence, 1951*A. denticelis* Lawrence, 1951\*

Angola: Luimbale. [Types: MNHN]

*Bambereca* Kauri, 1985*B. spinifrons* Kauri, 1985\*

Zaire: Kalimabenge River. [Holotype: MRAC]

*Bancoella* Lawrence, 1947b*B. bimaculata* Lawrence, 1947b\*

Ivory Coast: Le Banco. [Types: MNHN]

*Banconyx* Lawrence, 1947b*B. denticelis* Lawrence, 1947b\*

Ivory Coast: Le Banco. [Holotype: MNHN]

*Bibundina* Roewer, 1935*B. pectinata* Roewer, 1935\*

Cameroon: Bibundi. [Types: SMF]

*Binderella* Roewer, 1935*B. bistrinata* Roewer, 1935\**Tengelinia paradoxa* Roewer, 1935 (2), **syn. n.**Chad: Binder (1). Cameroon: Tengelin Mts (2). [Types: *bistrinata* – SMF\*; *paradoxa* (holotype) – SMF\*]*Binderia* Roewer, 1935*B. spinarmata* Roewer, 1935\*

Chad: Binder. [Types: SMF]

*Blantyre* Roewer, 1912*B. armata* Roewer, 1912\*

Malawi: Blantyre. [Holotype: SMF]

*Bolama* Roewer, 1927*B. spinosa* Roewer, 1927\*

Guinea-Bissau: Bolamo, Rio Cassini. [Types: SMF\*, MCSN]

*Bueana* Roewer, 1927*B. ehippiata* Roewer, 1927\*

Cameroon: Buea. [Types: SMF]

*Buamba* Roewer, 1935*B. filipes* Roewer, 1935\*

Zaire: Buamba. [Holotype: SMF]

*Bulobana* Roewer, 1935*B. infuscata* Roewer, 1940

Tanzania: Moshi. [Types: SMF]

*B. octopunctata* Roewer, 1935\*

Zaire: Buloba. [Types: SMF]

*Bundukia* Lawrence, 1962*B. nigra* Lawrence, 1962\*

Tanzania: Uluguru Mts. [Types: MRAC]

*Buniabia* Roewer, 1961a*B. filipes* Roewer, 1961a\*

Zaire: Bunia district. [Holotype: MRAC]

*Bwitonatus* Roewer, 1950*B. marlieri* Roewer, 1950\*

Zaire: Bwito (1), Lukuba (Roewer 1961a). [Holotype: MRAC]

*Callereca* Roewer, 1940*C. angolensis* Lawrence, 1949

*Callereca angolensis*: Lawrence 1951 (2), 1957b (3).

Angola: Luachimo River (1, 2, 3), Mussungue River (1), Kunduéje River (1), Dundo (2), Tala Mungongu (2), Chiumbe River (2), Dala Falls (2), Dundundu River (2, 3), Camipopo River (3). Zaire: betw. Tshikapa and Luluabourg (2). [Types: MNHN]

*C. gracilis* Roewer, 1940\*

Tanzania: Moshi. [Types: SMF]

*C. teteana* Roewer, 1954

Mozambique: Tete. [Holotype: SMF]

*Cassinia* Roewer, 1927*C. macrochelis* Roewer, 1927\*

Guinea-Bissau: Rio Cassini. [Types: SMF\*]

*Celimba* Roewer, 1940*C. parvula* Roewer, 1940\*

Tanzania: Moshi. [Holotype: SMF]

*Cerea* Sørensen, 1896*C. feai* Roewer, 1927*Cerea feae* Roewer, 1927 [ICZN, Art. 31a]

Isl. Bioko: Basilé, Musola. Gabon: Fernan Vaz. [Types: SMF, MCSN]

*C. lugubris* Sørensen 1896\*

Cameroon: Bibundi (Loman 1910), loc. ? (1). [Types: NHRS]

*Cereatta* Roewer, 1935*C. celeripes* (Loman, 1910)\**Cerea celeripes* Loman, 1910

Cameroon: Bibundi, Bamenda. [Types: MWNH]

*C. elegans* Roewer, 1935

Cameroon: Edea. [Holotype: SMF]

*C. kivuensis* Roewer, 1961a

Zaire: Itombwe. [Holotype: MRAC].

*Cereipes* Roewer, 1935*C. angusta* (Roewer, 1912)\**Cerea angusta* Roewer, 1912

Cameroon: Bibundi, Victoria. [Types: SMF]

*Cereodiscus* Roewer, 1940*C. lesserti* Roewer 1940\*

Cameroon: Edea. [Types: SMF]

*Cereoides* Roewer, 1935*C. nebulosa* (Sørensen, 1896)\**Cerea nebulosa* Sørensen, 1896; Loman 1910 (2).

Cameroon: Victoria (2), loc. ? (1). [Holotype: NHRS]

*Chilon* Sørensen, 1896*C. albater* (Roewer, 1935), **comb. n.***Bindercola albatra* Roewer, 1935

Chad: Binder. [Types: SMF\*]

*C. cinctus* Sørensen, 1896

Cameroon: Kitta. [Types: NHRS]

*C. horridus* (Roewer, 1912), **comb. n.***Acanthophrysella horrida* Roewer, 1912, 1927 (2), 1935 (3)

Cameroon: Edea (information from the original label; published: Malimba – 1). Isl. Bioko: Basilé (2, 3). [Holotype: SMF\*]

*C. laevituber* (Roewer, 1953), **comb. n.***Acanthocoryphus laevituber* Roewer, 1953

Ivory Coast: Mt Nimba, Mt Tonkoui. [Types: MNHN ?, SMF\*]

*C. robustus* Sørensen, 1896\**Chilon undulatus* Sørensen, 1896 (2); Roewer 1927 (11), 1935 (13), **syn. n.***Monorhabdium singulare* Loman, 1902 (3), Lawrence 1965 (17), **syn. n.***Chilon robustus*: Loman 1910 (4), Roewer 1927 (10)*Chilon armatus* Roewer, 1912 (5), **syn. n.***Chilon ferrugineus* Roewer, 1912 (6), **syn. n.***Monorhabdium echinatum* Roewer, 1912 (7); 1927 (12), **syn. n.***Chilon atroluteus* Roewer, 1916 (8), **syn. n.***Metachilon armatus*: Roewer 1923*Parachilon ferrugineus*: Roewer 1923 (9)*Parachilon atroluteus*: Roewer 1923*Tsadsea picta* Roewer, 1935 (14), **syn. n.***Parachilon bistriatus* Roewer, 1940 (15), **syn. n.***Parachilon bicolor* Roewer, 1942 (16), **syn. n.**

Ivory Coast: Bourukru (5), Lamto (17), Soubre (17), loc. ? (7). Ghana: Sekondi (9). Togo: loc. ? (6). Nigeria: Calabar (7), Benin River (7). Cameroon: Yaoundé (3, 13), Kitta (1, 2), Edea (1, 2, 15), Bibundi (4), Buea (8), S of Lake Chad (14), loc. ? (1, 2). Isl. Bioko.: Basilé (1), Baja de S. Carlos (10), Musola (10, 16). Gabon: Fernan Vaz (11). Congo: N'Kogo (12). [Types: *robustus* – NHRS; *undulatus* – NHRS, SMF\*; *singulare* (holotype) – ZMHB\*; *armatus* (holotype) – SMF\*; *ferrugineus* – ZMUH; *echinatum* – SMF\*; *atroluteus* (holotype) – SMF\*; *picta* (holotype) – SMF\*; *bistriatus* (holotype) – SMF\*; *bicolor* – SMF\*]

A widely distributed and variable species – the type material of synonymised species have been compared with respect to their genital morphology.

*C. royi* (Roewer, 1961), **comb. n.***Kobacoryphus royi* Roewer, 1961c

Senegal: Niokolo-Koba Nat. Park. [Types: MNHN ?, SMF\*]

*C. salebrosus* (Karsch, 1879), **comb. n.***Scotolemon salebrosa* Karsch, 1879*Conomma* (?) *salebrosa*: Roewer 1912*Acanthophrysella salebrosa*: Roewer 1923

Angola (Cabinda): Chinchocho. [Holotype: ZMHB\*]

*C. scaber* Sørensen, 1896*Chilon nobilis* Sørensen, 1896 (2), **syn. n.***Chilon scaber*: Loman 1910 (3)*Acanthophrysella nobilis*: Roewer 1912 (4)*Acanthophrysella scabra*: Roewer 1912 (5), 1923 (6), 1927 (7), 1935 (8)*Villersiella coxalis* Roewer, 1953 (9); 1959 (10), **syn. n.**

Ivory Coast: Mt Tonkoui (9), Mt Nimba (10). Togo: Yegu  (6; original label: Misah he). Cameroon: Bibundi (3), Ga River (8), Shari River nr Lake Chad (4), loc. ? (1, 2). Congo: N'Kogo (7). Za re: Kunungu (8), Kawa Forest (8), Lake Albert (8). Doubtful localities. Uganda: Entebbe (8). Tanzania: 'Ngori-Krater' (8; = ?Ngorongoro). [Types: *scaber* - NHRS; *nobilis* - NHRS; *coxalis* (holotype) - MNHN ?].

The species has been also reported from Guinea-Bissau: Bissau, Bolamo, Rio Cassini (7), but a revision of the material stored in SMF revealed, that it belongs to a different, undescribed species.

*C. villiersi* (Roewer, 1953), **comb. n.**

*Sangalkamia villiersi* Roewer, 1953

Senegal: Sangalkam. [Holotype: MNHN ?]

*Cleoxestus* Roewer, 1954

*C. luteipictus* Roewer, 1954\*

Mozambique: Tete. [Holotype: SMF]

*Comereca* Roewer, 1961a

*C. rectipes* Roewer, 1961a\*

Za re: Lubile, Lubuka. [Types: MRAC, SMF]

*Congolla* Roewer, 1935

*C. hispidipalpus* Roewer, 1935\*

Za re: Buemba [Holotype: SMF]

*Congonella* Roewer, 1935

*C. frontalis* Roewer, 1935\*

Za re: Buemba. [Holotype: SMF]

*Congonia* Roewer, 1935

*C. spinifons* Roewer, 1934\*

Za re: Buemba. [Holotype: SMF]

*Cryptopygoplus* Lawrence, 1931

*C. africanus* Lawrence, 1931\*

Zimbabwe: Harare (NMSA 14544), Leopard Rock Hotel nr Mutare (NMSA 4136). Mozambique: Inhambane (1). [Types: SAMC]

*Dicoryphus* Loman, 1902

*D. ater* (Lawrence, 1962), **comb. n.**

*Caelobunus ater* Lawrence, 1962

Tanzania: Uluguru Mts. [Types: MRAC]

*D. furvus* Loman, 1902\*

Tanzania: Dar-es-Salaam, Langenburg. [Types: ZMHB\*]



*D. jeanneli* (Roewer, 1913), **comb. n.***Metarhabdopygus jeanneli* Roewer, 1913*Caelobunus jeanneli*: Lawrence 1962

Kenya: Mt Kenya, Kikuyu-Land. Tanzania: Kilimanjaro. [Types: SMF\*, MNHN]

*D. melanacanthus* (Loman, 1902), **comb. n.***Coelobunus melanacanthus* Loman, 1902*Coelobunus fuscus* Roewer, 1912, (2), **syn. n.***Caelobunus melanacanthus*: Roewer 1923 (3), 1935*Caelobunus fuscus*: Roewer 1923, 1935Tanzania: Darema (1), Amani (3), loc. ? (2). [Types: *melanacanthus* – ZMHB\*; *fuscus* – SMF\*, ZMUH]*Djemia* Roewer, 1935*D. cooperi* Roewer, 1935\*

Ethiopia: Djem Djem Forest. [Types: SMF\*, BMNH]

*Doloressus* Roewer, 1935*D. cippatus* Roewer, 1935\*

Tanzania: Usambara Mts (1). Zaïre: Faradje (Roewer 1950), Lubilu (Roewer 1961a), Rasthungu (Roewer 1961a). [Types: SMF]

*D. filipes* Lawrence, 1949

Angola: Luachimo River (1), Dicoco River (1), E of Dundo (1), Chiumbe River (Lawrence 1951), Luachimo Forest (Lawrence 1951), Alto Chicapa (Lawrence 1957b). [Types: MNHN]

*D. ghesquierei* (Roewer, 1950)*Ealabius ghesquierei* Roewer, 1950*Doloressus ghesquierei*: Lawrence 1962

Zaïre: Eala. [Holotype: MRAC]

*D. palmgreni* Kauri, 1985

Zaïre: Post Kikutu. [Types: MRAC]

*Dongila* Roewer, 1927*D. silvatica* Roewer, 1927

Congo: Lambarene. [Types: SMF]

*D. spinosa* Roewer, 1927\*

Congo: Dongila. [Types: SMF, MNHN]

*Edeala* Roewer, 1927*E. palpiplus* Roewer, 1927\*

Cameroon: Edea. [Holotype: SMF]

*Ereala* Roewer, 1950*E. armata* Roewer, 1950\**Faradjea schoutedeni* Roewer, 1950 (2), **syn. n.**Zaïre: Eala (1), Karawa (1), Giri (1), Faradje (2). [Types: *armata* – MRAC, SMF\*; *schoutedeni* – MRAC]

*Erebalda* Roewer, 1940*E. cryptostigma* Roewer, 1940\*

Tanzania: Moshi. [Holotype: SMF]

*Ereca* Sørensen, 1910*E. affinis* Sørensen, 1910

Tanzania: Mt Meru (1; Lawrence 1962), Kilimandjaro (Lawrence 1962). [Types: NHRS, ZMHB]

*E. bengtsoni* Kauri, 1985

Zaire: Mwenga. [Types: MRAC]

*E. calcanifera* Kauri, 1985

Zaire: Itombwe. [Types: MRAC]

*E. fusca* Kauri, 1985

Zaire: Katobo. [Types: MRAC]

*E. imitatrix* Kauri, 1985

Zaire: Itombwe, Lake Lungwe. [Types: MRAC]

*E. itombwensis* Kauri, 1985

Zaire: Itombwe. [Types: MRAC, ZMUB]

*E. kalimabengana* Kauri, 1985

Zaire: source of Kalimbenge River. [Types: MRAC]

*E. lata* Sørensen, 1910

Tanzania: Mt Meru. [Holotype: NHRS]

*E. lawrencei* Kauri, 1985

Zaire: Katobo, Kakolo Mt, source of Kalimabenge River, Mulunge, source of Mugono River, Uvira. [Types: MRAC]

*E. loekenae* Kauri, 1985

Zaire: source of Kakololo River, source of Mugono River, Luvungi. [Types: MRAC]

*E. lyrifera* Kauri, 1985

Zaire: Kiyambi. [Types: MRAC]

*E. maculata* Roewer, 1913*Ereca undulata maculata*: Goodnight & Goodnight 1959 (2)*Ereca maculata*: Roewer 1961a (3), Lawrence 1962 (4)

Kenya: Mt Kenya (1), Mt Kinangop (1). Tanzania: Kilimanjaro (1, 2, 4), Mt Meru (4), Mt Oldeani (4). Rwanda: Rugege Forest (3). Zaire: Kabare (3), Kalehe (3), Irumu (3), Uvira (3). [Types: SMF, MNHN]

*E. maculata aberdarensis* Goodnight & Goodnight, 1959

Kenya: Mt Aberdare. [Types: UZIU]

*E. modesta* Sørensen, 1910*E. modesta*: Roewer 1913 (2), Lawrence 1957a (3), Goodnight & Goodnight 1959 (4)

Zaire: Irangi (3), Kahuzi (3), Maniema (3). Uganda: Kijabe (2). Tanzania: Mt Meru (1, 4), Kilimanjaro (2). Kenya: Mombasa (4). [Types: NHRS, ZMHB]

*E. mwengana* Kauri, 1985

Zaire: Mwenga. [Types: MRAC]

*E. robusta* Kauri, 1985

Zaire: Feshi. [Holotype: MRAC]

*E. rufa* Sørensen, 1910

Tanzania: Kilimanjaro (1), Arusha (Roewer 1923). [Types: NHRS]

*E. sangensis* Kauri, 1985

Zaire: Sange Mt [Holotype: MRAC]

*E. silvatica* Kauri, 1985

Zaire: 30 km S Kianza. [Types: MRAC]

*E. simulator* Sørensen, 1910*E. simulator*: Roewer 1913 (2), 1961a (3)

Zaire: Nyakasibu (3), Kalehe (3), Kabare (3), Uvira (3), Irumu (3). Kenya: Mau Escarpment (2). Tanzania: Kilimanjaro (1). [Types: NHRS, ZMHB]

*E. soerensemi* Lawrence, 1962

Tanzania: Ngorogoro, Mt Oldeani, Kilimanjaro. [Types: MRAC]

*E. triareolata* Roewer, 1961a

Rwanda: Rugege Forest. [Holotype: MRAC]

*E. undulata* Sørensen, 1910\**Ereca undulata*: Roewer 1923 (2), 1952b (3), Lawrence 1962 (5)*Ereca undulata undulata*: Goodnight & Goodnight 1959 (4)

Tanzania: Mt Meru (1, 5), Kilimanjaro (2, 3), Ngorongoro (2, 5), Mt Oldeani (5), Bamburu (2). Uganda: Mt Ruwenzori (4). [Types: NHRS, ZMHB, NMSA]

*E. unicolor* Roewer, 1961a

Zaire: Lukuba. [Types: MRAC, SMF]

*Erecabia* Roewer, 1940*E. hartmanni* Roewer, 1940\*

Tanzania: Moshi. [Types: SMF]

*E. pluridens* Lawrence, 1962

Tanzania: Uluguru Mts. [Types: MRAC]

*Erecella* Roewer, 1935*E. basilewskyi* Lawrence, 1962

Uganda: Bugiri. [Types: MRAC]

*E. biseriata* Roewer, 1961a

Rwanda: Rugege Forest. [Types: MRAC]

*E. brunnea* Roewer, 1940

Rwanda: loc. ? [Types: SMF]

*E. flava* Roewer, 1935

Tanzania: NW shore of Lake Tanganyika. Zaire: Eala (Roewer 1950), Usumbura (Roewer 1950). [Types: SMF]

*E. lutea* Roewer 1935\*

Uganda: loc. ?. Rwanda: Rugege Forest (Roewer 1961a). [Types: SMF]

*E. nigropicta* Roewer, 1961a

Zaire: Lukuba, Irumu. [Types: MRAC, SMF]

*E. signata* Roewer, 1950

Zaire: Okondo. [Holotype: MRAC]

*E. transversalis* Roewer, 1961a

Zaire: Kabare. [Types: MRAC]

*E. walikaleana* Kauri, 1985

Zaire: Irangi, Ilyanga, Maniema. [Types: MRAC]

*Erecomma* Roewer, 1940*E. laurenti* Roewer, 1961a

Zaire: Lubile – Maniema. [Types: MRAC, SMF]

*E. montana* Roewer, 1940\*

Tanzania: Moshi. [Holotype: SMF]

*Erecongoa* Roewer, 1950*E. gracilis* Roewer, 1950\*

Zaire: Eala. [Types: MRAC]

*E. granulata* Roewer, 1952a

Zaire: Upemba Nat. Park. [Holotype: MRAC]

*Erecops* Roewer, 1940*E. multispina* Roewer, 1940\*

Tanzania: Moshi. [Types: SMF]

*Erecula* Roewer, 1935*E. cincta* Roewer, 1961a

Zaire: Mulenge (1; Kauri 1985). [Types: MRAC, SMF]

*E. crassipes* Kauri, 1985

Zaire: Mulenge, Kalimabenge, Mt Kahuzi. [Types: MRAC]

*E. leleupi* Lawrence, 1962

Tanzania: Mt Hanang. [Types: MRAC]

*E. marmorata* Roewer, 1940

Tanzania: Moshi (1). Zaire: Irumu (Roewer 1961a). [Types: SMF]

*E. novemdentata* Roewer, 1961b

Tanzania: Kungwe. [Holotype SMF]

*E. pachypes* Roewer, 1935\**Erecula pachypes*: Roewer 1950 (2), 1961a (3)

Zaire: Ituri-Blukwa (1), Eala (2), Bwito-Bugembi (2), Kabare (3), Uvira (3), Mulenge (3), Nyundo (3). Burundi: Mosso de Untana (3). Rwanda: Rugege Forest (3). Tanzania: Usambara Mts (1). [Types: SMF]

*E. septemdentata* Lawrence, 1957*Erecula 7-dentata* Lawrence, 1957a

Zaire: Kahuzi (1), Kivu (1), Loaki (Roewer 1961a), Mulenge (Roewer 1961a). [Types: MRAC]

*Eregonda* Roewer, 1950*E. tenuis* Roewer, 1950\*

Zaire: Eala. [Types: MRAC]

*Eupodauchenius* Roewer, 1912*E. luteocruciatus* (Loman, 1910)\**Selenca luteo-cruciata* Loman, 1910*Eupodauchenius luteocruciatus*: Roewer 1912 (2), 1927 (4), 1935 (5)*Eupodauchenius marginatus* Roewer, 1912 (3), **syn. n.**Ivory Coast: Sassandra (2). Cameroon: Bibundi (1), Muconge Farm on Mungo River (2). Isl. Bioko: Basilé (4, 5). Gabon: Fernan Vaz (4, 5), loc. ? (3). [Types: *luteocruciata* – MWNH; *marginatus* – SMF\*]*Euselencia* Roewer, 1923*E. feai* Roewer, 1927*Euselencia feae* Roewer, 1927 [ICZN, Art. 31a]

Congo: Ndjolé. [Types: SMF]

*E. gracilis* (Sörensen, 1896)\**Selenca gracilis* Sörensen, 1896; Loman 1910 (2)

Cameroon: Bibundi (2), loc. ? (1). [Types: NHRS]

*Eusidama* Roewer, 1913*E. minima* Roewer, 1913\*

Tanzania: Kilimanjaro. [Types: MNHN, SMF]

*Fakoa* Roewer, 1923*F. spinulata* (Roewer, 1915)\**Acanthophrysella spinulata* Roewer, 1915

Cameroon: Mt Cameroun. [Holotype: SMF\*]

*Findia* Roewer, 1915*F. atrolutea* Roewer, 1915\*

Congo: Finda (1). Zaire: Faradje (Roewer 1950). [Holotype: SMF]

*Fizibius* Roewer, 1961a*F. proprius* Roewer, 1961a\*

Zaire: Itombwe. [Types: MRAC, SMF]

*Gomezzyta* Roewer, 1935*G. africana* Roewer, 1935\*

Ethiopia: Lake Tana. [Holotype: SMF\*]

*Gulufia* Roewer, 1935*G. frontalis* Roewer, 1935\*

Ethiopia: Gulufa (1), Belletta (Caporiacco 1949). [Types: SMF\*]

*Henriquea* Roewer, 1927*H. spinigera* Roewer, 1927\*

Isl. Príncipe: Infante D. Henrique. [Type: SMF\*]

*Humbea* Roewer, 1935*H. bimaculata* Roewer, 1935\*

Angola: Mossamedes. [Holotype: SMF]

*Hypoxestinus* Roewer, 1927*H. frontalis* Roewer, 1935

Cameroon: Adamaua. [Holotype: SMF]

*H. nkogoi* Roewer, 1927\**Hypoxestinus nkogoi*: Roewer 1935 (2)

Congo: N'Kogo (1). Zaïre: Lubumbashi (2), Hgaga Niungu (2), Wamba (2). [Types: SMF]

*Hypoxestus* Loman, 1902*H. bituberculatus* Lawrence, 1962

Tanzania: Mt Oldeani, Mt Hanang. [Types: MRAC]

*H. coxicornis* Roewer, 1940*Hypoxestus coxicornis*: Roewer 1950 (2)

Zaïre: Eala (2), Rutshuru (2). Rwanda: loc. ? (1). [Types: SMF\*]

*H. ealanus* Kauri, 1985*Hypoxestus patellaris* Roewer 1950, non Sørensen, 1910

Zaïre: Eala. [Holotype: MRAC]

*H. glaber* Kauri, 1985*Hypoxestus patellaris*: Roewer 1961a (part.), non Sørensen, 1910

Zaïre: Kalambi, Kamitunga, Lukuba. [Types: MRAC].

Type species of the subgenus *Lomanus* Kauri, 1985, whose status is, however, not certain.*H. levis* Loman, 1902\**Amasis accentuatus* Sørensen, 1910 (2), **syn. n.***Amasis mesoleucus* Sørensen, 1910 (3), **syn. n.***Amasis quadricornis* Sørensen, 1910 (4), **syn. n.***Hypoxestus obscurus* Roewer, 1912 (5); 1935 (9), 1939 (10), Lawrence 1957a, **syn. n.***Hypoxestus accentuatus*: Roewer 1912, Lawrence 1962 (12)

*Hypoxestus mesoleucus*: Roewer 1912, 1913 (6), Lawrence 1962 (13)

*Hypoxestus quadricornis*: Roewer 1912, 1923 (7)

*Hypoxestus levis*: Roewer 1923 (8), Lawrence 1962 (14)

Zaire: Albert Nat. Park (10), Kahuzi (11). Uganda: Lake Mutanda (9). Tanzania: Kilimanjaro (1, 4, 6, 12, 13, 15), Mt Meru (2, 3, 4, 12, 13), Mt Oldeani (13), Arusha (14), Katona (7), Tanga (8). [Types: *levis* – ZMHB\*; *accentuatus* – NHRS, ZMHB; *mesoleucus* – NHRS, ZMHB; *quadricornis* – NHRS, ZMHB; *obscurus* (holotype) – SMF\*]

*H. patellaris* (Sörensen, 1910)

*Amasis patellaris* Sörensen 1910

*Hypoxestus patellaris*: Roewer 1912, 1913 (2), Goodnight & Goodnight 1959 (3), Lawrence 1961 (4)

Kenya: Mt Kenya (3), Mt Aberdare (3). Tanzania: Kilimanjaro (1, 4), Ngorongoro (4). [Types: NHRS, ZMHB]

*H. planus* Goodnight & Goodnight, 1959

Uganda: Mt Ruwenzori. [Types: UZIU, AMNH?]

*H. roeweri* **nom. n.**

*Randilea obscura* Roewer, 1952b, nec *Hypoxestus obscurus* Roewer, 1912

Tanzania: Kilimanjaro.

The species is here transferred to *Hypoxestus* (SMF 11280/58 – 2 ♀ – Types, rev. W. St.) and renamed.

*H. scaphoides* Kauri, 1985

*Hypoxestus patellaris*: Roewer 1961a (part.) non Sörensen, 1910

Zaire: Kalehe, Kalimabenge. [Types: MRAC]

*H. trituberculatus* Lawrence, 1962

Tanzania: Mt Hanang, Mt Oldeani. [Types: MRAC]

*Irnia* Roewer, 1935

*I. scabra* Roewer, 1935\*

Ethiopia: Irna (1), Gulufa (ex SMF 1233/22 – 1 ♀, det. W. St.). [Holotype: SMF\*]

*Irumua* Roewer, 1961a

*I. caeca* Roewer, 1961a\*

Zaire: Irumu. [Types: MRAC, SMF]

*Ivocoryphus* Lawrence, 1965

*I. jezequeli* Lawrence, 1965\*

Ivory Coast: Lamto. [Types: MNHN]

*Izea* Roewer, 1927

*I. armata* Roewer, 1935

Cameroon: River Ga, Kribi, Etam. [Types: BMNH, SMF\*]

*I. pectinata* Roewer, 1927\*

Isl. São Tomé: Aqua Izé. [Types: SMF\*]

*Jaundea* Roewer, 1935*J. spinulata* (Roewer, 1912)\**Selenca spinulata* Roewer, 1912

Cameroon: Yaoundé, Shari River nr Lake Chad. [Types: ZMUH, SMF]

*Kakontwea* Roewer, 1951*K. leleupi* Roewer, 1951\*

Zaire: Kakontwe. [Types: MRAC]

*Kasaina* Lawrence, 1957a*K. scabra* Lawrence, 1957a\*

Zaire: Luebo River nr Luluabourg. [Types: MRAC]

*Katangania* Kauri, 1985*K. monticola* Kauri, 1985\*

Zaire: Mt Kabobo. [Holotype: MRAC]

*Kituvia* Kauri, 1985*K. spinifera* Kauri, 1985\*

Zaire: Kitutu. [Types: MRAC]

*Kungwea* Roewer, 1961b*K. scabra* Roewer, 1961b

Tanzania: Kungwe. [Holotype: SMF]

*Lawrenciola* Roewer, 1935*L. damarana* (Lawrence, 1931)\**Cryptopygoplus damaranus* Lawrence, 1931

Namibia: Kaoko Otavi (1), Okorosave (1), Dorsland (SMW 34504), Etosha Pan (NMSA 7684), Okaukuejo (NMSA 14309), Raymond se Gat (SMW 34515), Sprokieswood (SMW 34511), Palmfontein (NMSA 14310), Kaross (SMW 34507), Tsumeb (1), Ghaub Cave (SMW 34503), Dragon Breath Cave (SMW 34506, NMSA 15465), Pofadder Gat (SMW 34516), Gamkarab (NMSA 14316), Kempten (NMSA 8473). Botswana: betw. Lechwee Camp and Khwai River Lodge in Okavango Delta (NMSA 14317). [Types: SAMC, SMF]. Adapted to arid environments, often in caves.

*L. rhodesiana* (Lawrence, 1931)*Cryptopygoplus rhodesianus* Lawrence, 1931

Zimbabwe: Mutare (1), Inyanga (NMSA 6063). RSA (Transvaal, Kruger Nat. Park): Pafuri (Lawrence 1963), Pretoriuskop (NMSA 8432). [Types: SAMC]

*Leleupiolus* Roewer, 1951*L. marmoratus* Roewer, 1951\*

Zaire: Plateau de Langa. [Holotype: MRAC]



*Lisposidama* Lawrence, 1962*L. filipes* Lawrence, 1962\*

Tanzania: Uluguru Mts. [Types: MRAC]

*Lossida* Roewer, 1935*L. rugosa* Roewer, 1935\*

Tanzania: Usambara. [Holotype: SMF]

*Lossidacola* Roewer, 1935*L. pachytarsus* Roewer, 1935\*

Tanzania: Usambara. [Types: SMF]

*Lubudia* Roewer, 1951*L. leleupi* Roewer, 1951\*

Zaire: Lubudi. [Holotype: MRAC]

*Lukandamila* Roewer, 1961b*L. cookei* Roewer, 1961b

Tanzania: Lukandamila. [Holotype: SMF]

*Lygippulus* Roewer, 1954*L. major* Roewer, 1954\*

Mozambique: Tete. [Types: SMF]

*L. nigrescens* Roewer, 1961b

Tanzania: Musenabantu. [Types: SMF]

*L. parvulus* Roewer, 1954

Mozambique: Tete. [Types: SMF]

*L. scaber* Roewer, 1954

Mozambique: Tete. [Holotype: SMF]

*L. setipes* Roewer, 1961a

Zaire: Kalehe. [Types: MRAC, SMF]

*Lygippus* Roewer, 1940*L. abdominalis* Roewer, 1940\*

Angola: loc. ? [Types: SMF]

*L. machadoi* Lawrence, 1951

Angola: Luimbale. [Types: MNHN]

*Mabwella* Roewer, 1952a*M. trochanteralis* Roewer, 1954

Mozambique: Tete. [Types: SMF\*]

The original description lacked citation of label data.

*M. wittei* Roewer, 1952a\*

Zaire: Mabwe, Kaswabilenga, Kilwezi, Kanonga, Ganza – all in Upemba Nat. Park.  
[Types: MRAC, SMF]

*Maccabeesa* Roewer, 1936*M. lawrencei* Roewer, 1936\*

*Maccabeesa lawrencei*: Staręga 1989a (2)

Mauritius: Maccabees Forest (1), Pamplemousses (2), Grotte de La Louise (2), Rivière Noire (2). [Types: SMF\*, BMNH]

*Machadoessa* Lawrence, 1951*M. inops* Lawrence, 1951\*

Angola: Luachimo Forest nr Dundo. Zaire: betw. Tshikapa and Luluabourg. [Types: MNHN]

*Mandaria* Roewer, 1935*M. caeca* Roewer, 1935\*

Cameroon: Mandara. [Holotype: SMF]

*Maracandinus* Roewer, 1912*M. rubrofemoratus* (Pavesi, 1895)\*

*Maracandus (Assamia) rubro-femoratus* Pavesi, 1895

Ethiopia: 'Alto Ganale Gudda'. [Types: MCSN\*]

*Marua* Roewer, 1935*M. schenkeli* Roewer, 1935

Gabon: Libreville. [Holotype: SMF]

*M. spinosa* Roewer, 1935\*

Cameroon: Marua. [Types: SMF]

*Mecutina* Roewer, 1935*M. filipes* Roewer, 1935\*

Mozambique: Mecatene. [Holotype: SMF]

*M. moshinia* Roewer, 1940

Tanzania: Moshi. [Holotype: SMF]

*Merucola* Roewer, 1935*M. granulatus* Roewer, 1935\*

*Merucola granulata* Roewer, 1935 [ICZN, Art. 30a]

Tanzania: Mt Meru. [Holotype: SMF]

*Metaselenca* Roewer, 1912*M. h-album* (Loman, 1910)\**Selenca H-album* Loman, 1910*Metaselenca h-album*: Roewer 1912 (2), 1935 (3)

Cameroon: Bibundi (1), Victoria (2). Chad: Binder (3). [Types: MWMH]

*Metasesostris* Roewer, 1915*M. armatus* Roewer, 1915\*

Tanzania: Uha. [Holotype: SMF]

*Metasidama* Roewer, 1915*M. ehippiata* Roewer, 1915\*

Tanzania: loc. ? [Holotype: SMF]

*M. gracilis* Lawrence, 1962

Tanzania: Uluguru Mts. [Types: MRAC]

*Metereca* Roewer, 1923*M. abnormis* (Roewer, 1912)\**Ereca abnormis* Roewer, 1912*Metereca abnormis*: Roewer 1923, 1935 (2), Goodnight & Goodnight 1959 (3)

Zaire: Manjema (2), Udjidji (2). Uganda: Mt Ruwenzori (3). Tanzania: E shore of Lake Tanganyika (1). [Holotype: SMF]

*M. aspersa* Roewer, 1935

Uganda: loc. ? [Holotype: SMF]

*M. concolor* Roewer, 1961a*Metereca concolor*: Kauri 1985 (2)

Zaire: Kabare (1), Magyo River nr Kabare (1), Kahuzi (2), Lubuka (1). [Types: MRAC, SMF]

*M. differens* (Lawrence, 1957)*Ereca differens* Lawrence, 1957a*Metereca differens*: Roewer 1961a

Zaire: Kahuzi. [Holotype: MRAC]

*M. katangana* Kauri, 1985

Zaire: Mt Kabobo. [Types: MRAC]

*M. kivuana* (Roewer, 1961)*Leleupereca kivuana* Roewer, 1961a*Metereca kivuana*: Kauri 1985 (2)

Zaire: Kabare (1), Kalehe (1), Kahuzi Mt (2), Mugono River (2), Kakololo River (2), Mt Kalimabenge (2), Uvira (2), Kwango (2). [Types: MRAC]

*M. kivuna* Roewer, 1961a*Metereca kivuna*: Kauri 1985 (2)

Zaire: Kabare (1), source of Kalimabenge River (2). [Types: MRAC, SMF]

*M. leleupae* Kauri, 1985

Zaire: Feshi. [Holotype: MRAC]

*M. longipes* Kauri, 1985

Zaire: source of Mugono River. [Types: MRAC]

*M. minuta* Roewer, 1954

Mozambique: Tete (1). Zaire: Kabare (Roewer 1961a). [Types: SMF]

*M. montana* (Roewer, 1912)

*Ereca montana* Roewer, 1912

*Metereca montana*: Roewer 1923, 1935 (2), 1950 (3), 1961a (4)

Zaire: Lubuka (4). Rwanda: shore of Lake Kivu (2), Bukungi (3), Rugege Forest (4). Burundi: Mosso de Untana (4). Tanzania (?): 'Kirunga-Berg' (1). [Types: SMF]

*M. papillata* Roewer, 1935

*Metereca papillata*: Roewer 1950 (2), 1961a (3)

Zaire: Eala (2), Kabare (3). Rwanda: Rugege Forest (3). Burundi: betw. Kigwena and Nyanza (3). Tanzania: Tabora (1). [Types: SMF]

*M. paradoxa* Kauri, 1985

Zaire: Katobo. [Types: MRAC]

*M. ripensis* Kauri, 1985

Zaire: Feshi. [Holotype: MRAC]

*M. simplex* (Roewer, 1952)

*Ereca simplex* Roewer, 1952a

*Metereca simplex*: Roewer 1961a (2)

Zaire: Lusine (1), Uvira (2), Kabare (2). Rwanda: Rugege Forest (2). [Types: MRAC, SMF]

*Monterece* Lawrence, 1962*M. paucidens* Lawrence, 1962\*

Tanzania: Uluguru Mts. [Types: MRAC]

*Musola* Roewer, 1927*M. longipes* Roewer, 1927\*

Isl. Bioko: Musola. [Types: SMF\*]

*Mutadia* Kauri, 1985*M. bifurcata* Kauri, 1985\*

Zaire: Kianza. [Types: MRAC]

*Mwenga* Kauri, 1985*M. setosa* Kauri, 1985\*

Zaire: Kitutu. [Types: MRAC]

*Namutonia* Lawrence, 1931*N. scabra* Lawrence, 1931\*

*Namutonia scabra*: Kauri 1961 (2)

Namibia: Kunene River (1), Otjitambi (NCAP 77/504, NMSA 15467), Okorosave (1), Etosha Pan (NMSA 14315), Sprokieswood (SMW 34511), Okaukuejo (NMSA 14308),

Namutoni (1), Ghaub (NMSA 14313), Palmfontein (NMSA 14311), Grootfontein (1), Kowares (2), Sandamap (NMSA 14312), Arandis (SMW 34502), De Waal (NMSA 14314).  
[Types: SAMC, SMF]

*N. wuehlischi* (Roewer, 1940), **comb. n.**

*Gobabisia wühlischi* Roewer, 1940

Namibia: Gobabis. [Holotype: SMF\*].

Probably a synonym of *N. scabra*.

*Neobaeorix* Lawrence, 1962

*N. cornuta* Lawrence, 1962\*

Tanzania: Uluguru Mts. [Holotype: MRAC]

*Neocoryphus* Lawrence, 1965

*N. niger* Lawrence, 1965\*

Ivory Coast: Lamto. [Types: MNHN]

*Neosidama* Roewer, 1915

*N. longipes* Roewer, 1915\*

Tanzania (?): Patawa Cave. [Holotype: SMF]

*Nkogoia* Roewer, 1927

*N. feai* Roewer, 1927\*

*Nkogoia feae* Roewer, 1927 [ICZN, Art. 31a]

Congo: NKogo. [Types: SMF]

*Numipedia* Kauri, 1985

*N. subterranea* Kauri, 1985\*

Zaire: Luvungi. [Holotype: MRAC]

*Orsimonia* Roewer, 1935

*O. filipes* Roewer, 1935\*

Ethiopia: E of Lake Tana. [Holotype: SMF\*]

*O. gracillima* (Roewer, 1935), **comb. n.**

*Othmar gracillimus* Roewer, 1935

Ethiopia: Harrar. [Types: SMF\*]

*Palmanella* Roewer, 1927

*P. tigrina* Roewer, 1927\*

Isl. São Tomé: Ribeira Palma. [Types: SMF\*]

*Parakodaika* Goodnight & Goodnight, 1944

*P. angolae* Goodnight & Goodnight, 1944\*

Angola: Chitau. [Holotype: AMNH]

*Paraselenca* Roewer, 1923*P. aculeata* (Roewer, 1912)\**Selenca aculeata* Roewer, 1912*Paraselenca aculeata*: Roewer 1923 (2), 1935 (3)

Ivory Coast: loc. ? (2). Ghana: loc. ? (3). Togo: Yegué (1, 2), Misahöhe (2). Cameroon: Mt Cameroun (2). [Types: ZMUH]

*P. hispida* (Roewer, 1912)*Selenca hispida* Roewer, 1912*Paraselenca hispida*: Roewer 1923 (2), 1935 (3)

Ghana: loc. ? (3). Togo: Yegué (1). Cameroon: Bipinde (2), Shari River nr Lake Chad (2). [Types: ZMUH]

*P. marginata* Roewer, 1935

Cameroon: loc. ? [Types: SMF]

*P. simonis* Henriksen, 1932

Sierra Leone: loc. ? [Types: ZMUC]

*Parasesostris* Roewer, 1915*P. granulatus* Roewer, 1915\*

Tanzania: Usagara Mts. [Holotype: SMF]

*Parazalmoxis* Roewer, 1913*P. africana* Roewer, 1913\**Parazalmoxis röwori* Caporiacco, 1949 (2), **syn. n.***Hypoxestus holmi* Goodnight Goodnight, 1959 (3), **syn. n.***Parazalmoxis africana*: Lawrence 1962 (4)Uganda: Mt Ruwenzori (3), Bugiri (4). Kenya: Mt Elgon (3), Mt Aberdare (3), Mt Kenya (1), Mt Kinangop (1), Mau Escarpment (2, 3), Molo (1), Timboroa (4). [Types: *africana* – SMF\*, MNHN; *röwori* – MZUF; *holmi* – UZIU, AMNH].Described in Phalangodidae but belongs to Assamiidae *s. l.* The synonymy *holmi* = *africana* was tentatively proposed by Roewer (1961a). Diagnosis of *röwori* is easy if one compares material of *P. africana* with the description of Caporiacco (1949).*Podaucheniellus* Roewer, 1927*P. bipolaris* Roewer, 1927\*

Cameroon: Edea. [Holotype: SMF]

*Podauchenius* Sørensen, 1896*P. longipes* Sørensen, 1896\**Podauchenius longipes* Roewer 1912 (2), 1927 (3), 1935 (4)

Cameroon: Johann-Albrechtshöhe (2), loc. ? (1). Gabon: Fernan Vaz (3). Zaire: Haut Vété-Mato (4), Homi (4), Lubumbashi (4). [Holotype: NHRS]

*Polycoryphus* Loman, 1902*P. asper* Loman, 1902\**Polycoryphus asper*: Roewer 1912 (2), Lawrence 1931

RSA (Cape Prov.): Port Elizabeth (1). Doubtful locality: Cape Town (2). Namibia: Beacon

35 on the border with Angola (NMSA 14545) [Holotype: ZMUH].

A species probably not found in the Cape Province of South Africa, but perhaps from southern Angola and northern Namibia. The type locality was given as Algoa-Bai (later changed by Lawrence to Port Elizabeth) and may represent a corruption of Angola.

*Procoryphus* Roewer, 1950

*P. multispinatus* Roewer, 1950\*

Zaire: Faradje. [Types: MRAC]

*P. straeleni* Roewer, 1952a

Zaire: Mabwe (Upemba Nat. Park). [Types: MRAC, SMF]

*Pulchandrus* Kauri, 1985

*P. longimanus* Kauri, 1985\*

Zaire: Senzo River, source of Sengi River, Kianza, source of Kikoli River, Kwenga River. [Types: MRAC]

*Pungoica* Roewer, 1914

*P. bifurcata* (Roewer, 1914), **comb. n.**

*Pungoiella bifurcata* Roewer, 1914; 1958 (5), 1959 (6), Lawrence 1965 (8).

*Pungoica decorata* Lawrence, 1947b (2), **syn. n.**

*Pygoselenca albisignata* Roewer, 1953 (3); 1959 (7), **syn. n.**

*Pungoica decorata*: Roewer 1958 (4)

Sierra Leone: Rio Pungo (1). Ivory Coast: Mt Nimba (3, 4, 5, 6, 7), ? Le Banco (2), Gonela (8). [Types: *bifurcata* – SMF\*, MNHN; *decorata* (holotype) – MNHN; *albisignata* – MNHN ?, SMF\*]

*P. simoni* Roewer, 1914\*

*Pungoica simoni*: Roewer 1927 (2), 1958 (3), 1959 (4)

Guinea-Bissau: Rio Cassini (2). Sierra Leone: Rio Pungo (1). Liberia: loc. ? (SMF 1190, rev. W. St.). Ivory Coast: Mt Nimba (3, 4). [Types: SMF\*, MNHN]

*Randilea* Roewer, 1935

*R. scabricula* Roewer, 1935\*

*Hypoxestus scabricula*: Goodnight & Goodnight 1959 (2)

Uganda: Mt Elgon (2). Uganda or Kenya: 'Randile-Landschaft' (1). [Types: SMF\*]

*Randilella* Lawrence, 1963

*R. transvaalensis* Lawrence, 1963\*

RSA (Transvaal): Magoebaskloof, Malta Forest, Entabeni Forest, Hanglip Forest. [Types: NMSA\*]

*Rhabdopygata* Roewer, 1954

*R. mossambica* Roewer, 1954\*

Mozambique: Tete. [Types: SMF]

*Rhabdopygella* Roewer, 1935*R. ferruginea* Roewer, 1935

Zaire: Lubumbashi. [Holotype: SMF]

*R. laevis* Roewer, 1935\*

Tanzania: Tanga. [Types: SMF]

*Rhabdopygus* Roewer, 1912*R. benoiti* Kauri, 1985

Zaire: Feshi. [Holotype: MRAC]

*R. fuscus* Roewer, 1912\**Rhabdopygus fuscus*: Roewer 1923 (2), 1927 (3), 1935 (4), 1939 (5), 1950 (6), 1961a (7)

Guinea-Bissau: Rio Cassini (3). Cameroon: Kribi (4), River Ga (4). Gabon: Ssibange (1). Congo: M'Goko (2). Zaire: Eala (4, 6), Bokala (4), Katanga - Lukafu (4), Homi - Sodja (4), Mulongo - Niunzu (4), Barumbu (4), Bohapo (6), Modjibo (6), Lulua - Luashi (6), Rutshuru (6), Faradje (6), Mayidi (7), Massabe Forest (7), Albert Nat. Park (5). [Types: SMF]

*R. maculatus* Roewer, 1935

Tanzania: Usambara. [Types: SMF]

*R. robustus* Lawrence, 1957b

Angola: Cacolo. [Holotype: MNHN]

*R. rugipalpis* Roewer, 1952a

Zaire: Upemba Nat. Park (many localities and specimens). [Types: MRAC, SMF]

*R. termitarum* Roewer, 1951

Zaire: Plateau de Langa. [Types: MRAC, SMF ?]

*Roewereca* Lawrence, 1962*R. tenebrosa* Lawrence, 1962\*

Tanzania: Uluguru Mts. [Types: MRAC]

*Santhomea* Roewer, 1927*S. scabra* Roewer, 1927\*

Isl. São Tomé: Vista Alegre. [Types: SMF\*]

*Sassandria* Roewer, 1912*S. bicolor* Roewer, 1912\**Assiniana reticulata* Roewer, 1914 (2), **syn. n.***Aburitius inermis* Roewer, 1935 (3), **syn. n.***Aburitius yapo* Roewer, 1935 (4), **syn. n.**Ivory Coast: Sassandra (1), Assinie (2), Yapo (4), Ghana: Aburi (3). [Types: *bicolor* (holotype) - SMF\*; *reticulata* - SMF\*, MNHN; *inermis* - SMF\*; *yapo* - MNHN?, SMF\*]*S. tenuipes* Lawrence, 1965

Ivory Coast: Niapoyo. [Types: MNHN]



*Scabrosidama* Lawrence, 1962*S. serraticornis* Lawrence, 1962\*

Tanzania: Uluguru Mts. [Types: MRAC]

*Selenca* Sørensen, 1896*S. maculata* Sørensen, 1896\*

*Selenca maculata*: Loman 1910 (2), Roewer 1912 (3)

Togo: Yegué (3). Cameroon: Bibundi (2), loc. ? (1). [Types: NHRS]

*Selencasta* (Roewer, 1927)*S. minuscula* (Roewer, 1927)\*

*Selenca minuscula* Roewer, 1927

Isl. Bioko: loc. ? [Types: SMF]

*Selencula* Roewer, 1935*S. filipes* (Roewer, 1927)\*

*Selenca filipes* Roewer, 1927

Isl. Bioko: Basilé. [Types: SMF\*]

*Sesostranus* Roewer, 1935*S. longipes* Roewer, 1950

Zaire: Matalé. [Holotype: MRAC]

*S. niger* Roewer, 1935\*

Uganda: loc. ? [Types: SMF]

*Sesostrellus* Roewer, 1935*S. gibbosus* Kauri, 1985

Zaire: Kabobo Mt [Types: MRAC]

*S. robustus* Roewer, 1935\*

*Sesostrellus robustus*?: Kauri 1985 (2)

Zaire: Mt Kalimabenge (2). Tanzania: NW shore of Lake Tanganyika (1). [Holotype: SMF]

*S. umbonatus* (Roewer, 1935)

*Sesostris umbonatus* Roewer, 1935; 1950 (2), 1961a (3)

*Sesostrellus umbonatus*: Kauri 1985

Zaire: Rugari (2), Rustiro (3), Mukole (3), Kabilombo (3), Kalehe (3), Bitabo (3).

Uganda: loc. ? (1). Rwanda: Rugege Forest (3). Burundi: betw. Kigwana and Nyansa (3). [Types: SMF]

*Sesostris* Sørensen, 1910*S. brevipes* Kauri, 1985

Rwanda: Bibaragu. Burundi: Janza. [Types: MRAC]

*S. gracilis* Sørensen, 1910\**Sesostris gracilis*: Roewer 1913 (2), 1935 (3), Goodnight & Goodnight 1959 (4)

Uganda: Lake Mutando (3), Entebbe (3), Mabira (3). Tanzania: Tanga (caves in the vicinity) (2, 4), Mt Meru (3), Kilimanjaro (1). [Types: NHRS]

*S. insulanus* Roewer, 1912*Sesostris insulanus*: Roewer 1935 (2), Kauri 1985 (3)

Zaire: Kalehe (3). Uganda: Kwidjiwi Isl. in Lake Kivu (1, 2), Lake Kivu (2). [Holotype: SMF]

*S. maculatus* Roewer, 1915*Sesostris maculatus*: Roewer 1939 (2), 1950 (3), 1961a (4)

Zaire: Eala (3), Usumbura (3), Nioka (3), Kivu (3), Bitale (4), Cyumba (4), Bushoko (4), betw. Kawamu and Walikale (4), Kijulube (4), Kabare (4), Mt Nyiganga (4), Albert Nat. Park (2). Uganda: Bukoba (1). Rwanda: Bukungi (3), Biumba (4). Burundi: Rusengo (4). [Types: SMF]

*S. maculifer* Kauri, 1985*Sesostris maculiferus* Kauri, 1985 [ICZN, Art. 31b, 31d]

Zaire: Kabobo Mt, Bendera. [Types: MRAC]

*Seuthesplus* Roewer, 1935*S. nigeriensis* Roewer, 1935\*

Ivory Coast: Le Banco (Lawrence 1947b). Nigeria: Nko (1). [Types: SMF, BMNH]

*S. perarmatus* Lawrence, 1965

Ivory Coast: Lamto. [Types: MNHN]

*Seuthessus* Kauri, 1985*S. pustulatus* Kauri, 1985\*

Zaire: Feshi. [Holotype: MRAC]

*Sidama* Pavesi, 1895*S. abessinica* Roewer, 1912*Phezilbus spiniger* Roewer, 1935 (2), *syn. n.*Ethiopia: Adis Ababa (2), loc. ? (1). [Types: *abessinica* (holotype) – SMF\*; *spiniger* (holotype) – SMF\*]*S. moesta* Pavesi, 1895\*

Ethiopia: Arussi Galla (Alto Ganale Gudda). [Holotype: MCSN ?]

*Simienatus* Roewer, 1956*S. scotti* Roewer, 1956\*

Ethiopia: Mindigabsa, Arghine. [Types: BMNH, SMF\*]

*Sokodea* Roewer, 1935*S. caeca* Roewer, 1935\*

Togo: Sokode. [Holotype: SMF]

*Spinixestus* Roewer, 1952a*S. armatus* Roewer, 1952a\*

Zaire: Masombwe, Munoi, Loie (Upemba Nat. Park). [Types: MRAC, SMF]

*S. benderanus* Kauri, 1985

Zaire: Bendera. [Holotype: MRAC]

*S. leleupi* Kauri, 1985

Zaire: Kianza. [Types: MRAC]

*S. polycuspidatus* Kauri, 1985

Zaire: Kalimabenge River. [Types: MRAC]

*S. rufus* Roewer, 1952a

Zaire: Mabwe (Upemba Nat. Park). [Types: MRAC, SMF]

*S. siteteus* Roewer, 1961b

Tanzania: Sitete. [Types: SMF]

*Talaspus* Roewer, 1935*T. spinimanus* Roewer, 1935\*

Mozambique: Mecatene. [Types: SMF]

*Termitereca* Roewer, 1940*T. singularis* Roewer, 1940\*

*Termitereca singularis*: Roewer 1950 (2)

Zaire: Eala (2), Lubumbashi (2). Tanzania: Moshi (1). [Holotype: SMF]

*Tetecus* Roewer, 1935*T. tenuis* Roewer, 1935\*

Mozambique: Tete. [Holotype: SMF]

*Thomecola* Roewer, 1935*T. quadrispina* (Roewer, 1927)\*

*Santhomea quadrispina* Roewer, 1927

Isl. São Tomé: Ribeira Palma, Vista Alegre, Aqua Izé. [Types: SMF\*]

*Tubereca* Kauri, 1985*T. biharaguana* Kauri, 1985\*

Rwanda: Biharagu. [Types: MRAC]

*Tundabia* Roewer, 1935*T. semicaeca* Roewer, 1935\*

Tanzania (?): 'Tunda-Berge'. [Holotype: SMF]

*T. ugandensis* Goodnight & Goodnight, 1959

Uganda: Kadem. [Types: UZIU]

*Tusipulla* Roewer, 1935*T. coxalis* Roewer, 1935\*

Tanzania: Usambara Mts. [Types: SMF]

*Typhlobunellus* Roewer, 1927*T. formicarum* Roewer, 1927\*

Cameroon: Buea. [Types: SMF]

*T. platypalpis* Lawrence, 1947b

Ivory Coast: Le Banco. [Holotype: MNHN]

*Typhlobunus* Roewer, 1915*T. troglodytes* Roewer, 1915\*

Kenya: Shimoni Cave (1). Tanzania: Tanga (cave) (Roewer 1935). [Holotype: SMF]

*Typhloburista* Lawrence, 1947b*T. pusilla* Lawrence, 1947b\*

Ivory Coast: Koua Bocca. [Holotype: MNHN]

*Umbonimba* Roewer, 1953*U. acanthops* Roewer, 1953\*

Ivory Coast: Mt Nimba (1; Roewer 1958, 1959). [Types: MNHN ?, SMF\*]

*Umtaliella* Lawrence, 1934*U. rhodesiensis* Lawrence, 1934\*

Zimbabwe: Inyanga (NMSA 6062), Mutare (= Umtali; 1), Vumba (NMSA 6067), Vumba Mts (NMSA 2854), Leopard Rock Hotel nr Mutare (NMSA 4132), Makurupini Camp in Chimanimani Mts (NMSA 1426), Chimanimani Mts (NMSA 6132), Mt Selinda nr Chipangi (NMSA 4139). Mozambique: Serra da Gorongosa (NMSA 6111, 6113). [Holotype: SAMC]

*Uviranus* Kauri, 1985*U. echinops* Kauri, 1985\*

Zaire: source of Kalimabenge River. [Holotype: MRAC]

*Viglua* Roewer, 1940*V. brunnipes* Roewer, 1940\*

Angola: loc. ? [Types: SMF]

*V. machadoi* Lawrence, 1949

Angola: 90 km SE Dundo. [Types: MNHN]

*V. machadoi granulosa* Lawrence, 1957b

Angola: Cazombo. [Types: MNHN]

*V. machadoi major* Lawrence, 1949*Viglua majora* Lawrence, 1949 1951 (2) [ICZN, Art. 31d]*Viglua machadoi majora*: Lawrence 1957b (3)

Angola: Dundo and vicinity (1, 2, 3), Lake Calundo (3), Alto Chicapa (3), Cacolo (3) Calunda (3), betw. Saurimo and Villa Luso (3). [Types: MNHN]

*Vilhena* Lawrence, 1949*V. delicata* Lawrence 1949*Vilhena delicata*: Lawrence 1951 (2)

Angola: Luachimo River nr Dundo (1, 2), Chiumbe River nr Dundo (2). [Types: MNHN]

## Biantidae

*Acudorsum* Loman, 1902*A. albimanum* Loman, 1902

Seychelles: Mahé. [Types: ZMUH, SMF\*]

*Anaceros* Lawrence, 1959*A. anodonta* Lawrence, 1959

Madagascar: Forêt d'Ambre, Nossi Bé. [Types: MNHN]

*A. canidens* Lawrence, 1959

Madagascar: Maroantsetra. [Holotype: MNHN]

*A. humilis* Lawrence, 1959\*

Madagascar: Maroantsetra. [Types: MNHN]

*A. pauliani* Lawrence, 1959

Madagascar: Moramanga, Brickaville, Nossi Bé. [Types: MNHN]

*Biantella* Roewer, 1927*B. reticulata* Roewer, 1927\*

Cameroon: Edea. [Holotype: SMF]

Excluded from Biantidae by Martens (1978) but not placed in any other family.

*Biantessus* Roewer, 1949*B. nigrotarsus* (Lawrence, 1933)\**Metabiantes nigrotarsus* Lawrence, 1933*Biantessus nigrotarsus*: Roewer 1949b, Kauri 1961 (2)

RSA (Natal): Margate (NMSA 2794), Port Edward (1, 2). [Types: NMSA]

*B. vertebralis* (Lawrence, 1933)*Metabiantes vertebralis* Lawrence, 1933*Biantanius vertebralis*: Roewer 1949b*Biantessus vertebralis*: Kauri 1961

RSA (Natal): Pietermaritzburg (1), Bisley (NMSA 7683), Drummond (1), Park Rynie (NMSA 7658). [Types: NMSA]

*Biantomma* Roewer, 1942*B. nigrospinosum* Roewer, 1942\*

Isl. Bioko: Pic St. Isabel. [Types: SMF]

*Clinobiantes* Roewer, 1927*C. paradoxus* Roewer, 1927\*

Cameroon: Bibundi. [Types: SMF]

*Cryptobiantes* Kauri, 1961*C. protector* Kauri, 1961\**Cryptobiantes protector*: Lawrence 1963 (2)

RSA (Transvaal): between Tshokwane and Letaba (1), Skukuza Koppies (2) – both in Kruger Nat. Park, vicinity of Tolwe (NMSA 8467). [Holotype: MZLU]

*Eubiantes* Roewer, 1915*E. africanus* Roewer, 1915\*

Tanzania: Usagara Mts (1), Uluguru Mts (Lawrence 1962). [Holotype: SMF]

*Eulacurbs* Roewer, 1949b*E. paradoxa* Roewer, 1949b\**Eulacurbs paradoxa*: Roewer 1953 (2), 1958 (3)

Ivory Coast: Mt Nimba (3), Yapo (2). Ghana: Aburi (1). Cameroon: Marua (SMF 12906/51). [Holotype: SMF]

*Fageibiantes* Roewer, 1949b*F. bicornis* (Fage, 1946)\**Biantes bicornis* Fage, 1946*Fageibiantes bicornis*: Roewer 1949b*Fageibiantes* [sic!] *bicornis*: Lawrence 1959

Madagascar: Ankarana. [Holotype: MNHN]

*F. bispina* Lawrence, 1959*Fageibiantes* [sic!] *bispina* Lawrence, 1959

Madagascar: Maroantsetra. [Types: MNHN]

*Heterolacurbs* Roewer, 1912*H. ovalis* Roewer, 1912\*

Togo: Yegué. [Holotype: SMF].

Excluded from Biantidae by Martens (1978) but not placed anywhere else.

*Hinzuanus* Karsch, 1880*H. africanus* Pavesi, 1883*Hinzuanus africanus*: Roewer 1949b (2), Staręga 1989a

Ethiopia: Let-Mareña (1), Irna (2). [Holotype: MCSN\*]

*H. comorensis* (Roewer, 1949)

*Biantica comorensis* Roewer, 1949b  
*Hovabiantes comoroensis* [sic !]: Lawrence 1959  
*Hinzuanius comorensis*: Staręga 1989a  
 Comoros: La Grille. [Types: SMF\*]

*H. flaviventris* (Pocock, 1903)

*Biantes flaviventris* Pocock, 1903b  
*Biantes bicolor* Pocock, 1903b (2)  
*Hinzuanius flaviventris*: Roewer 1912  
*Hinzuanius bicolor*: Roewer 1912, Staręga 1989a  
*Acrobiantes flaviventris*: Roewer 1923, 1949b  
*Acrobiantes bicolor*: Roewer 1923  
*Biantidius bicolor*: Roewer 1949b  
 Socotra (2) and Abd Al-Kuri Isl. (1). [Types: *flaviventris* – BMNH; *bicolor* – BMNH, SMF\*]

*H. gracilis* (Roewer, 1949)

*Biantula gracilis* Roewer, 1949b  
*Acrobiantes gracilis*: Lawrence 1959 (2)  
*Acrobiantes nigroannulatus* Lawrence, 1959 (3)  
*Hinzuanius gracilis*: Staręga 1989a  
 Madagascar: Île Sainte-Marie (1), Forêt de Bemora (2), Tamatave (3). [Types: *gracilis* – SMF\*; *nigroannulatus* – MNHN]

*H. insulanus* Karsch, 1880\*

Comoros: Anjouan. [Holotype: ZMHB\*]

*H. littoralis* (Lawrence, 1959), **comb. n.**

*Acrobiantes littoralis* Lawrence, 1959  
 Madagascar: Nossi Bé, Mangabe. [Types: MNHN]

*H. madagassis* (Roewer, 1949)

*Biantica madagassis* Roewer, 1949b  
*Acrobiantes madegassis* [sic !]: Lawrence 1959 (2)  
*Hinzuanius madagassis*: Staręga 1989a  
 Madagascar: Bai Antongil (1), Maroantsetra (2), Ambodivoangy (2), Manambato (2). [Types: SMF\*]

*H. mauriticus* Roewer, 1927

*Hinzuanius mauriticus*: Roewer 1936 (2), Staręga 1989a (4)  
*Probiantes mauriticus* Roewer, 1949b (3)  
 Mauritius: Les Mares (2), Maccabees Forest (2), Mont Le Pouce (2, 4), Mont Cocotte (4), loc. ? (1, 3). [Types: *H. mauriticus* (holotype) – SMF\*; *P. mauriticus* (holotype) – SMF\*]

*H. milloti* (Fage, 1946), **comb. n.**

*Biantes milloti* Fage, 1946  
*Hovabiantes milloti* (Lawrence, 1959): Roewer 1961a  
 Madagascar: Andranoboka (grotte d'Anjonhibe). [Holotype: MNHN]

*H. pardalis* (Lawrence, 1959), **comb. n.**

*Acrobiantes pardalis* Lawrence, 1959  
*Acrobiantes brevispinus* Lawrence, 1959 (2)  
*Acrobiantes minor* Lawrence, 1959 (3)  
 Madagascar: Ankarafantsika (1), Forêt de Didy (2), Moramanga (2), Manjakandriana (2), Maroantsetra (3), Ambodivoangy (3), Beanana (3), Fenerive (3), Brickaville (3). [Types: *pardalis* – MNHN; *brevispinus* MNHN; *minor* – MNHN]

*H. parvulus* Hirst, 1911

*Biantes parvulus*: Roewer 1912  
*Hinzuanus parvulus*: Staręga 1989a  
 Seychelles: Praslin, Mahé. [Types: BMNH, SMF\*]

*H. pauliani* (Lawrence, 1959), **comb. n.**

*Hovabiantes pauliani* Lawrence, 1959  
*Biantes scaber* Lawrence, 1959 (2)  
*Hovabiantes scaber*: Roewer 1961a  
 Madagascar: Majunga (1), Forêt de la'Ankarafantsika (2), Mt d'Ambre (2). [Types: *pauliani* – MNHN; *scaber* – MNHN]

*H. tenebrosus* (Lawrence, 1959), **comb.n.**

*Biantes tenebrosus* Lawrence, 1959  
*Hovabiantes tenebrosus*: Roewer 1961a  
 Madagascar: Nossi Bé, Bas-Manongarivo. [Types: MNHN]

*H. vittatus* (Simon, 1885)

*Biantes vittatus* Simon, 1885  
*Hinzuanus hildebrandti* Roewer, 1912 (2)  
*Acrobiantes vittatus*: Roewer 1915  
*Acrobiantes hildebrandtii*: Henriksen 1932 (2)  
*Hovabiantes vittatus*: Lawrence 1959 (3)  
*Hovabiantes hildebrandti*: Lawrence 1959  
*Hovabiantes immaculatus* Lawrence, 1959 (4)  
*Hovabiantes simplicidens* Lawrence, 1959 (5)  
*Hovabiantes vachoni* Lawrence, 1959 (6)  
*Hinzuanus vittatus*: Staręga 1989a  
 Madagascar: Nossi Bé (1, 3), Baie de Diégo (4), Ankarafantsika (5, 6), 'NW-Madagascar' (2), Mahilaka (SMF 9500/38), Lokobe (SMF 9501/39, 9504/42, 9505/43), Fort Dauphin (SMF 9502/40), Bezavona (SMF 9503/41). [Types: *vittatus* – MNHN, SMF\*; *hildebrandti* – ZMHB\*; *immaculatus* – MNHN; *simplicidens* – MNHN; *vachoni* – MNHN]

*Ivobiantes* Lawrence, 1965*I. spinipalpis* Lawrence, 1965\*

Ivory Coast: Lamto. [Types: MNHN]

*Lacurbs* Sørensen, 1896

Removed from Biantidae by Martens (1978) but not allocated to any other family.

*L. nigrimana* Roewer, 1912

*Lacurbs nigrimanus* Roewer, 1912  
*Lacurbs nigrimana*: Roewer 1927 (2), 1953 (3), 1958 (4)  
 Ivory Coast: Mt Nimba (4), Bourukru (1), Yapo (3). Ile. São Tomé: Aqua Izé (2). Isl. Príncipe: Infante D. Henrique (2). [Holotype: SMF]

*L. spinosa* Sørensen, 1896

*Lacurbs spinosa*: Loman 1910 (2), Roewer 1912 (3)  
 Cameroon: Kitta (1), Bibundi (2), Victoria (3). [Types: NHRS]

*Metabiantes* Roewer, 1915*M. armatus* Lawrence, 1962

Tanzania: Uluguru Mts. [Types: MRAC]



*M. barbertonensis* Lawrence, 1963

RSA (Transvaal): Barberton. [Types: NMSA]

*M. basutoanus* Kauri, 1961

Lesotho: Qachasnek. [Holotype: MZLU]

*M. cataracticus* Kauri, 1961

*Metabiantes leighi* Kauri 1950 (part.), non Pocock, 1902

RSA (Natal): Karkloof Falls Nature Reserve (1), Entumeni Forest Reserve (NMSA 15437), Dlinza Forest (NMSA 15427). [Holotype: MZLU]

*M. Roewer*, 1949*b*

*Hinzuanius convexus*: Goodnight & Goodnight 1959 (2)

Uganda: Ruwenzori (1, 2), Mt Elgon (2). [Holotype: SMF]

*M. filipes* (Roewer, 1912)

*Biantes filipes* Roewer, 1912

*Metabiantes filipes*: Roewer 1915 (2), 1949 (3)

Ivory Coast: Bourukru (2). Cameroon: Victoria (1), Buea (3). [Types: SMF, ZMHB]

*M. flavus* Lawrence, 1949

*Metabiantes flava* Lawrence, 1949; 1951 (2), 1957*b* (3)

*Metabiantes flavus*: Roewer 1961*a*

Angola: Dundo and vicinity (1, 2, 3). [Types: MNHN]

*M. hanstroemi* Kauri, 1961

*Metabiantes leighi*: Kauri 1950 (part.), non Pocock, 1902

RSA (Natal): Karkloof Falls Nature Reserve. [Holotype: MZLU]

*M. incertus* Kauri, 1961

RSA (Natal): Royal Natal Nat. Park (1), Cathedral Peak (NMSA 15440, 15441, 15454). [Types: MZLU]

*M. insulanus* (Roewer, 1949), **comb. n.**

*Spinibiantes insulanus* Roewer, 1949*b*

Isl. Principé: loc. ? [Holotype: SMF]

*M. jeanneli* (Roewer, 1913)

*Biantes jeanneli* Roewer, 1913

*Metabiantes jeanneli*: Roewer 1923

*Hinzuanius jeanneli*: Goodnight & Goodnight 1959 (2)

Kenya: Cheteni nr Mombasa (1), Mombasa (2), Shimoni Caves (1). Tanzania: Isl. Pemba (SMF 1566/22). [Types: SMF, MNHN]

*M. kakololius* Kauri, 1985

Zaire: Kakololo basin (Kivu). [Types: MRAC]

*M. kosibaiensis* Kauri, 1961

RSA (Natal): Kosi Bay Nature Reserve (1), Lake Sibayi (NMSA 14527). [Holotype: MZLU]

*M. lawrencei* **nom. n.**

*Metabiantes obscurus* Lawrence, 1962, nec Kauri, 1961

Tanzania: Uluguru Mts, Mt Meru. [Types: MRAC]

*M. leighi* (Pocock, 1902)*Hinzuanus* [sic!] *leighi* Pocock, 1902*Spinibiantes leighi*: Roewer 1915, 1949b (5)*Metabiantes leighi*: Lawrence 1931 (2), 1933 (3), 1938b (4)

Mozambique: Maputo (2 – as Delagoa Bay), 'Massiene' (= ?Masimbe; 2). RSA (Natal): Ingwavuma (NMSA 1857, 4149), Hluhluwe Game Reserve (NMSA 59, 62, 6086), False Bay Park (NMSA 15430), Charters Creek Camp on Lake St Lucia (NMSA 15432), St Lucia Bay (NMSA 867), Dukuduku Forest (NMSA 6122), Eshowe (NMSA 1, 43), Dlinza Forest (NMSA 15429), Nkandhla Forest Reserve (NMSA 35, 908, 1065), Ngoye Forest (NMSA 6042), Mtunzini (NMSA 6047), Mfongosi (2), Sheffield Beach (NMSA 1072, 6097, 6127), Umhlali (NMSA 39, 4125, 6074), Compensation Beach (NMSA 3, 19, 34), Kranskop (2, 3), Pietermaritzburg (4), Inchanga (NMSA 6045), Drummond (3), Shongweni (NMSA 33, 2815), Gillitts-Emberton (NMSA 6014), Durban (2, 3, 5), Amanzimtoti (2, 3), Winklespruit (NMSA 41), Umgababa (NMSA 880), Port Shepstone (2), Oribi Gorge Nature Reserve (NMSA 1050), Port Edward (NMSA 1048), loc. ? (1); (Cape Prov.): East London (2). Transkei: Umtata (2), Port St Johns (2, 3), Umgazi Mouth (NMSA 6060), Manubi (2), Kentani (2). [Holotype: BMNH]

*M. litoralis* Kauri, 1961

RSA (Natal): Empangeni (NMSA 15426), Dlinza Forest (NMSA 15428), Umlalazi Nature Reserve (NMSA 15448), Twin Streams Farm (NMSA 15434, 15435), Durban (1). [Holotype: MZLU]

*M. longipes* Kauri, 1985

Zaire: Kwenga River. [Holotype: MRAC]

*M. machadoi* Lawrence, 1957

*Metabiantes punctatus*: Lawrence 1951, non Sørensen, 1910 (1)

*Metabiantes machadoi* Lawrence, 1957b (2)

Angola: Camissombo (1), Cacololo (2), Xá-Cassau (2). [Types: MNHN]

*M. meraculus* (Loman, 1898)

*Biantes meraculus* Loman, 1898

*Metabiantes meraculus*: Roewer 1915b (4), 1949b (4)

*Metabiantes maximus* Lawrence, 1931 (2)

*Metabiantes maximus* Lawrence 1937b (3), Kauri 1961 (5)

RSA (Natal): Kosi Bay Nature Reserve (3, 5), Ingwavuma (NMSA 1856), Pongolo River (3), Msenleni (NMSA 6070), False Bay Park (NMSA 15431), Hluhluwe Game Reserve (3), Gwaliweni Forest (NMSA 6079); (Cape Prov.): Alicedale (NMSA 14532), Ecce Pass (NMSA 14540), Grahamstown (4), Howieson's Poort (NMSA 14541), Cowie River (NMSA 14538), Port Alfred (NMSA 14539), loc. ? (1). Transkei: Somerville nr Tsolo (2). [Types: *meraculus* – ZMAN; *maximus* (holotype) – NMSA].

There is a bit of confusion about this species and its synonymy with *M. maximus*. Kauri (1961) gave a detailed description of *maximus*, designated a lectotype [sic!] and stated that both species were identical. This is, of course, quite possible, but his lectotypus was from Kosi Bay in Zululand and *M. maximus* was described from Transkei. As *M. meraculus* has been described from the Cape Province, we may have two species: one in the Cape Province and Transkei (*M. meraculus*) the other in Zululand (undescribed?).

*M. minutus* Kauri, 1985

Zaire: Irangi. [Types: MRAC]

*M. montanus* Kauri, 1985

Zaire: Mugono River waterfall, source of Kalimabenge River, Kalimbenge, Mt Kakololo, between Katobo and Kakololo. [Types: MRAC]

*M. obscurus* Kauri, 1961

RSA (Cape Prov.): Robinson Pass in Outeniekwberge. [Types: MZLU]

*M. parvulus* Kauri, 1985

Zaire: Sanzo River nr Kianza, source of Kikoli River nr Feshi, Feshi. [Types: MRAC]

*M. perustus* Lawrence, 1963

RSA (Transvaal): Louis Trichardt (NMSA 7606), Entabeni (NMSA 7609), Hanglip Forest (NMSA 7600), Magoebaskloof (NMSA 7630), Malta Forest (NMSA 7637), Mariepskop (1), Sabie (NMSA 15464, NCAP 87/364, 87/385). [Types: NMSA]

*M. pumilio* Roewer, 1927

Isl. Principé: Infante D. Henrique (1). Cameroon: Edea (Roewer 1949b). [Types: SMF]

*M. punctatus* (Sörensen, 1910)

*Biantes punctatus* Sörensen, 1910

*Metabiantes punctatus*: Roewer 1915 (2), 1961a (6), 1961b (7), Lawrence 1947b (3), 1957a (4)

*Hinzuanus punctatus*: Goodnight & Goodnight 1959 (5)

Zaire: Irumu (7), Kahuzi (4), Luebo River nr Luluabourg (4). Uganda: Mt Elgon (5). Kenya: Kibwezi (2), Sagana (5). Tanzania: Kilimanjaro (1, 5), Mt Meru (1), Kungwe-Mahali Mts (6). Doubtful locality. Ivory Coast: Le Banco (3). [Types: NHRS, ZMHB]

*M. pusulosus* (Loman, 1898)\*

*Biantes pusulosus* Loman, 1898; Roewer 1912 (2)

*Metabiantes pusulosus*: Roewer 1915, 1949b (6), Lawrence 1931 (3), 1933 (4), 1947a (5), Martens 1978 (7)

RSA (Transvaal): Kaapmuiden (3); (Natal): Dukuduku Forest Reserve (5), Kranskop (3, 4), York (NMSA 2800), Rietvlei (3, 4), Dargle (NMSA 922), Howick (4), Pietermaritzburg (3, 4), Drummond (4), Lower Illovo (1), Margate (NMSA 2797), Port Shepstone (NMSA 1046); (Cape Prov.): East London (3), Hogsback (3), Port Alfred (3), Bathurst (NMSA 15422), Alexandria (3), Grahamstown (3, 6), Alicedale (3, 6), Port Elizabeth (2, 7), Addo (3), Uitenhage (3), Nature's Valley (NMSA 15424), Knysna (3, 4). Transkei: Somerville nr Tsolo (3), Port St Johns (NMSA 2775). [Types: ZMAN]

*M. rudebecki* Kauri, 1961

Transkei: Mount Fletcher. [Holotype: MZLU]

*M. stanleyi* Kauri, 1985

Zaire: Mt Kabobo. [Holotype: MRAC]

*M. submontanus* Kauri, 1985

Zaire: Maniema, Kikutu Post. [Types: MRAC]

*M. teres* Lawrence, 1963

RSA (Transvaal): Mariepskop (1), Graskop (1), Sabie (NMSA 15463, NCAP 87/380, 87/381). Swaziland: Mbabane (NMSA 8454). [Types: NMSA]

*M. teretipes* Lawrence, 1962

Tanzania: Uluguru Mts [Types: MRAC]

*M. traegardhi* Kauri, 1961

RSA (Natal): betw. Lake Sibayi and Mkuze. [Holotypes: MZLU]

*M. trifasciatus* Roewer, 1915

*Metabiantes trifasciata*: Caporiacco 1949 (2)

*Metabiantes trifasciatus*: Roewer 1950 (3), 1961a (4), Lawrence 1962 (5)

Zaire: Lugwe (3), Kabare (4), Lubuka (4), Uvira (4). Kenya: Elmenteita (2), Mau (2). Tanzania: Kilimanjaro (1, 5), Mt Meru (5), Mt Oldeani (5), Ngorongoro (5). [Types: SMF]

*M. ulindinus* Kauri, 1985

Zaire: Ulindi basin. [Holotype: MRAC]

*M. unicolor* (Roewer, 1912)*Biantes unicolor* Roewer, 1912*Metabiantes unicolor*: Roewer 1915, 1961a (2), Lawrence 1962 (3)

Zaire: betw. Kalima and Shabunda (2). Rwanda: Rugege Forest (2). Tanzania: Mundani (1), Mt Oldeani (3), 'Masai-Steppe' (1). [Types: SMF, ZMHB]

*M. urbanus* Kauri, 1961

RSA (Natal): Umlalazi Nature Reserve (NMSA 15449), Twin Streams Farm (NMSA 15436), Durban (1). [Holotype: MZLU]

*M. varius* Kauri, 1961

RSA (Transvaal): Malta Forest (NCAP 81/649), S of Lydenburg (1). [Holotype: MZLU]

*M. zuluanus* Lawrence, 1937b*Biantiplus zuluanus*: Roewer 1949b*Metabiantes zuluanus*: Kauri 1961

Mozambique: Massinga (NMSA 15443). RSA (Natal): Kosi Bay Nature Reserve (1), Lake Sibayi (NMSA 8456, 14542, 14543), Pongolo River nr Jozini (NMSA 910), Charters Creek Camp at Lake St Lucia (NMSA 15433), Thumbu Camp in Umfolozi Game Reserve (NMSA 15456). [Types: NMSA]

*M. zuurbergianus* Kauri, 1961

RSA (Cape Prov.): Suurbergpas in Suurberge Mts (1), Thomas Baines Nature Reserve (NMSA 7687). [Types: MZLU]

*Metalacurbs* Roewer, 1914

Excluded from Biantidae by Martens (1978) but not placed in any other family.

*M. cornipes* (Roewer, 1958)*Prolacurbs cornipes* [sic] Roewer, 1958*Metalacurbs cornipes*: Lawrence 1965

Ivory Coast: Mt Nimba. [Types: MNHN ?, SMF].

The correct name of the species should be *cornipes* (used in explanation to fig. 3 in Roewer 1958 and on original label); *cornines* is simply a printer's error [ICZN, Art. 32b c]*M. oedipus* (Roewer, 1958)*Prolacurbs oedipus* Roewer, 1958*Metalacurbs oedipus*: Lawrence 1965

Ivory Coast: Mt Nimba. [Types: MNHN ?, SMF]

*M. simoni* Roewer, 1914\**Metalacurbs Simoni*: Lawrence 1947b (2)*Metalacurbs simoni*: Roewer 1958 (3)

Ivory Coast: Mt Nimba (3), Assinie (1), Le Banco (2). [Holotype: SMF]

*M. villiersi* (Roewer, 1953)*Prolacurbs villiersi* Roewer, 1953; 1958 (2), 1959 (3)*Metalacurbs villiersi*: Lawrence 1965 (4)

Ivory Coast: Mt Nimba (1, 2, 3), Mt Tonkoui (1), Lamto (4). [Types: MNHN ?]

*Monobiantes* Lawrence, 1962*M. benoiti* Lawrence, 1962\*

Kenya: Molo. [Types: MRAC]

*Prolacurbs* Roewer, 1949b*P. singularis* Roewer, 1949b\*

Ghana: Aburi. [Holotype: SMF]

*Zairebiantes* Kauri, 1985*Z. microphthalmus* Kauri, 1985\*

Zaire: Mwenga Territory. [Types: MRAC]

## Samoidae

Assigned by Roewer (1912) as a subfamily of Phalangodidae, this family deserves familial status. It is probably more closely related to Biantidae than to Phalangodidae.

*Hovanoceros* Lawrence, 1959*H. bison* Lawrence, 1959\*

Madagascar: Maroantsetra. [Types: MNHN]

*Malgaceros* Lawrence, 1959*M. boviceps* Lawrence, 1959\*

Madagascar: Nossi Bé. [Types: MNHN]

*Microconomma* Roewer, 1915*M. armatipes* Roewer, 1915\*

Cameroon: Bakossu. [Holotype: SMF]

*Mitraceras* Loman, 1902*M. crassipalpus* Loman, 1902\*

Seychelles: Mahé. [Types: ZMUH]

*Tetebius* Roewer, 1949b*T. latibunus* Roewer, 1949b\*

Mozambique: Tete. [Holotype: SMF\*].

Described in Phalangodinae, but belongs to Samoidae: tarsi III and IV with scopula.

## Neogoveidae

*Metagovea* Rosas Costa, 1950*M. gabonica* Juberthie, 1969

Gabon: Bélinga, Makokou. [Types: MNHN]

*Parogovia* Hansen, 1921*P. sironoides* Hansen, 1921\*

Isl. Bioko: Punta Frailes, Basilé. [Types: MCSN ?, ZMUC ?]

## Ogoveidae

*Ogovea* Roewer, 1923*O. grossa* (Hansen et Sørensen, 1904)\*

*Ogovia grossa* Hansen et Sørensen, 1904

*Ogovea grossa*: Roewer 1923, Juberthie 1969

Gabon: River Ogooue. [Holotype: MNHN]

*O. nasuta* (Hansen, 1921)

*Ogovia nasuta* Hansen, 1921

*Ogovea nasuta*: Roewer 1927

Isl. Bioko: Musola. [Types: MCSN, ZMUC]

## Pettalidae

*Parapurcellia* Rosas Costa, 1950*P. fissa* (Lawrence, 1939)\*

*Purcellia fissa* Lawrence, 1939

*Parapurcellia fissa*: Rosas Costa 1950

Transkei: Port St Johns. [Types: NMSA]

*P. monticola* (Lawrence, 1939)

*Purcellia monticola* Lawrence, 1939

*Parapurcellia monticola*: Rosas Costa 1950

RSA (Natal): Cathedral Peak (NMSA 6093), Cathkin Peak Forest Reserve (1), Champagne Castle Hotel (NMSA 4143, 6076, 6125). [Types: NMSA]

*P. rumpiana* (Lawrence, 1933)

*Purcellia rumpiana* Lawrence, 1933; 1939

*Parapurcellia rumpiana*: Rosas Costa 1950

RSA (Natal): York (NMSA 2801), Pietermaritzburg – Botanical Garden (1), – Town Bush (NMSA 2793, 2805, 7655, 7677), Sweet Waters (NMSA 863). [Types: NMSA]

*P. silvicola* (Lawrence, 1939)

*Purcellia silvicola* Lawrence, 1939

*Parapurcellia silvicola*: Rosas Costa 1950

RSA (Natal): Nkandhla Forest Reserve (1), Ngoye Forest (NMSA 6041). [Types: NMSA]

*Purcellia* Hansen & Sørensen, 1904*P. illustrans* Hansen & Sørensen, 1904\*

*Purcellia illustrans*: Lawrence 1931 (2), Kauri 1961 (3)

RSA (Cape Prov.): Table Mt nr Cape Town (1, 2, 3), Devil's Peak (2), Newlands (2), Kirstenbosch Botanical Garden (NMSA 1113), Noordhoek (2), Stellenbosch (2), Houwhoek (2), Tradouw Pass (3), Knysna (2; doubtful). [Types: ZMUC]

*P. peregrinator* Lawrence, 1963

RSA (Transvaal): Mariepskop Forest. [Holotype: NMSA]

*P. transvaalica* Lawrence, 1963

RSA (Transvaal): Hanglip Forest nr Louis Trichardt. [Types: NMSA]

*Speleosiro* Lawrence, 1931*S. argasiformis* Lawrence, 1931\**Speleosiro argasiformis*: Juberthie 1971

RSA (Cape Prov.): Wynberg Caves in Table Mt nr Cape Town. [Types: SAMC]

## Caddidae

*Caddella* Hirst, 1925*C. africana* (Lawrence, 1931)*Oonopsopilio africanus* Lawrence, 1931*Caddella africana*: Lawrence 1934, Roewer 1957 (2), Kauri 1961 (3), Shear 1975

RSA (Cape Prov.): Cape Town – Signal Hill (1, 2), Table Mt (1), Simon's Town (1), Plumstead (1), Ladismith (1), Steenbras Dam (3), Ashton (1), St Helena Bay (1), 'Addo Bush' (1; doubtful). [Types: SAMC]

*C. capensis* Hirst, 1925\**Caddella capensis*: Kauri 1961 (2), Shear 1975

RSA (Cape Prov.): Stormsrivierpiek in Tzitzikamma Nat. Park (2), Alicedale (NMSA 14432), Grahamstown (1), Port Alfred (1). [Types: BMNH]

*C. croeseri* Staręga, 1988

RSA (Natal): Karkloof Forest; (Cape Prov.): Diepwalle Forest Station nr Knysna. [Holotype and paratypes: NMSA, paratype: SMF]

*C. spatulipilis* Lawrence, 1934*Caddella spatulipilis* [sic!]: Shear 1975

RSA (Cape Prov.): Franschoek (so on the label; in the original description: Jonkershoek; 1), Worcester (SAMC). [Types: SAMC]

*C. spatulipilis* var. *caledonica* Lawrence, 1934*Oonopsopilio africanus* Lawrence, 1931 (part.)

RSA (Cape Prov.): Caledon. [Types: SAMC]

## Neopilionidae

*Neopilio* Lawrence, 1931\**N. australis* Lawrence, 1931\**Neopilio australis*: Kauri 1961 (2), Hunt & Cokendolpher 1991 (3)

RSA (Cape Prov.): Cape Town – Signal Hill (1, 3), Simons' Town (1, 3), Newlands (1, 3), Hout Bay (1, 3), St James (1), Table Mt (2), Touws River (1, 3), Caledon (1). [Types: SAMC, NMSA, SMF; lectotype – designated by Hunt &amp; Cokendolpher (1991) – in SAMC]

*Vibone* Kauri, 1961*V. vetusta* Kauri, 1961\*

RSA (Cape Prov.): Table Mt nr Cape Town. [Holotype: MZLU - lost? (Hunt & Cokendolpher 1991)]

## Gagrellidae

*Strandia* Roewer, 1910*S. ceylonensis* (Karsch, 1891)

*Strandia ceylonensis*: Roewer 1936 (1), Staręga 1989a (2)

Isl. Réunion: Mare Longue (2), Ravine à Malheur nr St Denis (2). Mauritius: Galets River (1), Mont Cocotte (2). [Types (from Ceylon): ZMHB].  
Probably introduced (Lawrence 1959).

## Family?

*Marwe* Shear, 1985*M. coarctata* (Shear, 1985)

Kenya: Tsavo East Nat. Park (Cobra Cavern).

No family assignment in the original description. Some affinities with Pettalidae and the Holarctic Sironidae.

## REFERENCES

- CAPORIACCO, L. DI. 1939. Arachnida. In: *Missione Biologica nel paese dei Borana. Raccolte zoologiche*. Roma 3(2): 303-385.
- . 1940. Aracnidi raccolti nella regione dei Laghi Etiopici della Fossa Galla. *Atti R. Acad. Ital.*, 11(18): 767-873.
- . 1947. Arachnida Africae Orientalis, a dominibus Kittenberger, Kovács et Bornemisza lecta, in Museo Nationali Hungarico servata. *Annales hist.-nat. Mus. natn hung.* 40(3): 97-257.
- . 1949. Aracnidi della colonia del Kenya raccolti da Toschi e Meneghetti negli anni 1944 - 1946. *Comment. pontif. Acad. scient.* 13(6): 309-494.
- FAGE, L. 1945. Arachnides cavernicoles nouveaux de Madagascar. *Bull. Mus. Hist. nat. Paris* (2)17: 301-307.
- . 1946. Complément a la Faune des Arachnides de Madagascar. *Bull. Mus. Hist. nat. Paris* (2)18: 256-267.
- GOODNIGHT, C. J. & GOODNIGHT, M. L. 1944. New Phalangids from the Old World. *Am. Mus. Novit.* 1255, 6 pp.
- . 1959. Report on a collection of Opilionids from East Africa. *Ark. Zool.* (2)12(15): 197-222.
- GUÉRIN-MÉNEVILLE, F. E. 1838. *Iconographie du Règne animal de Cuvier ou Représentation d'après nature de l'une des espèces les plus remarquables et souvent non encore figurées de chaque genre d'animaux. Avec un texte descriptif mis au courant de la science. Ouvrage pouvant servir d'atlas à tous les traités de zoologie*. Paris 2 (t. 4 f. 4), 3 (p. 12).
- HANSEN, H. J. 1921. The Pedipalpi, Ricinulei, and Opiliones (exc. Op. Laniatores) collected by Mr Leonardo Fea in tropical West Africa and adjacent Islands. In: *Studies on Arthropoda*. Copenhagen: Glydendalske Boghandel 1: 5-55, 4 t.
- HANSEN, H. J. & SÖRENSEN, W. 1904. *On Two Orders of Arachnida. Opiliones, especially the Suborder Cyphophthalmi, and Ricinulei, namely the Family Cryptostemmatoidae*. Cambridge: Cambridge University Press.
- HENRIKSEN, K. L. 1932. Descriptiones Laniatorum (Arachnidorum Opilionum subordinis) fecit William Sörensen. Opus posthumum. *K. dansk. Vidensk. Selsk. Skr.* 9 (III.4): 197-422.



- HIRST, S. 1911. The Araneae, Opiliones and Pseudoscorpiones. In: The Percy Sladen Trust expedition to the Indian Ocean in 1905. Under the leadership of Mr J. Stanley Gardiner. *Trans. Linn. Soc. Lond.* (2) Zool. **14**: 379–395.
- 1913. Second report on the Arachnida – the Scorpions, Pedipalpi, and supplementary notes on the Opiliones and Pseudoscorpions. In: The Percy Sladen Trust Expedition to the Indian Ocean in 1905, under the leadership of Mr J. Stanley Gardiner, M. A. Vol. 5. *Trans. Linn. Soc. Lond.* (2) Zool. **16**: 31–37.
- 1925. On some new genera and species of Arachnida. *Proc. zool. Soc. Lond.* **1925**: 1271–1280.
- HUNT, G. S. & COKENDOLPHER, J. C. 1991. Ballarrinae, a New Sub-family of Harvestmen from the Southern Hemisphere (Arachnida, Opiliones, Neopilionidae). *Rec. Austr. Mus.* **43**(2): 131–169.
- JUBERTHIE, C. 1969. Sur les Opilions Cyphophthalmes Stylocellinae du Gabon. *Biologia Gabon.* **5**: 79–92.
- 1970. Les genres d'Opilions Sironinae (Cyphophthalmes). *Bull. Mus. Hist. nat. Paris* (2)**41**: 1371–1390.
- 1971. Les Opilions Cyphophthalmes cavernicoles. Notes sur *Speleosiro argasiformis* Lawrence. *Bull. Mus. Hist. nat. Paris* (2)**42**: 864–871.
- KARSCH, F. 1879. Westafrikanische Arachniden gesammelt von Herrn Stabsarzt Dr. Falkenstein. *Z. ges. Naturw. Halle* **52**: 329–373.
- 1880. Arachnologische Blätter (Decas I). [IX. Neue Phalangiden des Berliner Museums]. *Z. ges. Naturw. Halle* **53**: 373–409, t. 12.
- KAURI, H. 1950. On some South African Spiders and Harvest-Spiders. *K. fysiogr. Sällsk. Lund. Förh.* **20**(6): 64–79.
- 1961. Opiliones. In: *South African Animal Life*: Almquist Wiksell **8**: 9–197.
- 1985. Opiliones from Central Africa. *Annles Mus. r. Afr. cent. Sci. Zool.* **245**: 1–168.
- LAWRENCE, R. F. 1931. The Harvest-spiders (Opiliones) of South Africa. *Ann. S. Afr. Mus.* **29**(2): 341–508.
- 1933. The Harvest-Spiders (Opiliones) of Natal. *Ann. Natal Mus.* **7**(2): 211–241, t. 12.
- 1934. New South African Opiliones. *Ann. S. Afr. Mus.* **30**(4): 549–586.
- 1937a. New harvest spiders from Natal and Zululand. *Ann. Natal Mus.* **8**(2): 127–153.
- 1937b. A collection of Arachnida from Zululand. *Ann. Natal Mus.* **8**(2): 211–273, t. 13.
- 1938a. Harvest-spiders of Natal and Zululand. *Ann. Natal Mus.* **8**(3): 345–370.
- 1938b. The odoriferous glands of some South African harvest spiders. *Trans. R. Soc. S. Afr.* **25**: 333–342, t. 9.
- 1939. A contribution to the opilionid fauna of Natal and Zululand. *Ann. Natal Mus.* **9**(2): 225–243.
- 1947a. A collection of Arachnids made by Dr I. Trägårdh in Natal and Zululand (1904–1905). *Göteborg. Vetensk. Vitter. Samh. Handl.* (B)**5**(9) 41 pp.
- 1947b. Opiliones from the Ivory Coast of West Africa collected by R. Paulian and C. Delamare-Deboutville. *Rev. fr. Ent.* **14**: 34–46.
- 1949. A collection of Opiliones and Scorpiones from North-East Angola made by Dr A. de Barros Machado in 1948. *Publ. cult. Co. Diam. Angola* **6**(4) 20 pp.
- 1951. A further collection of Opiliones from Angola made by Dr A. de Barros Machado in 1948–1949. *Publ. cult. Co. Diam. Angola* **13**: 29–44.
- 1952. A collection of cavernicolous and termitophilous Arachnida from the Belgian Congo. *Revue Zool. Bot. afr.* **46**: 1–17.
- 1957a. The Opiliones collected by Dr A. de Barros Machado in the Belgian Congo during 1953 and 1955. *Revue Zool. Bot. afr.* **56**(1–2): 151–166.
- 1957b. A third collection of Opiliones from Angola. *Publ. cult. Co. Diam. Angola* **34**: 51–66.
- 1958. A collection of cavernicolous Arachnids from French Equatorial Africa. *Revue suisse Zool.* **65** (4, 41): 857–866.
- 1959. Arachnides Opilions. *Faune de Madagascar* **9**. Tananaarive Tsimbazaza (Int. Rech. Scient.) 121 pp.
- 1962. Mission zoologique de l'I.R.S.A.C. en Afrique orientale (P. Basilewsky et N. Leleup, 1957). LXXXIV. Opiliones. *Annles Mus. r. Afr. Cent. Zool.* **110**: 8–89.
- 1963. The Opiliones of the Transvaal. *Ann. Transv. Mus.* **24**(4): 275–304.
- 1965. A small collection of Opiliones from the Ivory Coast of West Africa. *Bull. Mus. Hist. nat. Paris* (2)**36**: 797–811.
- LOMAN, J. C. C. 1898. Beiträge zur Kenntnis der Fauna von Süd-Afrika. Ergebnisse einer Reise von

- Prof. Max Weber im Jahre 1894. IV. Neue Opilioniden von Süd-Afrika und Madagaskar. *Zool. Jhb. Abt. Syst.* **11**: 515–531, t. 31.
- 1902. Neue aussereuropäische Opilioniden. *Zool. Jhb. Abt. Syst.* **16**: 163–216, t. 9.
- 1910. Opilioniden des naturhistorischen Museums in Wiesbaden. *Jhb. nassau. Ver. naturk.* **63**: 2–7.
- MARTENS, J. 1978. Opiliones aus dem Nepal-Himalaya. IV. Biantidae (Arachnida). *Senckenberg. biol.* **58**(5/6): 347–414.
- PAVESI, P. 1883. Studi sugli aracnidi africani. III. Aracnidi del regno di Scioa e considerazioni sull'aracnofauna d'Abissinia. *Ann. Mus. civ. Stor. nat. Genova* **20**: 6–105.
- 1895. Esplorazione del Giuba e del suoi affluenti compiuta del cap. V. Bottego durante gli anni 1892–93 sotto gli auspicii della Società Geografica Italiana. – Risultati zoologici. Aracnidi. *Ann. Mus. civ. Stor. nat. Genova* (2) **15** (= 35): 493–537.
- 1897. Aracnidi Somali e Galla raccolti da Don Eugenio dei Principi Ruspoli. *Ann. Mus. civ. Stor. nat. Genova* (2) **18** (= 38): 151–188.
- POCOCK, R. I. 1902. On some new harvest-spiders of the Order Opiliones from the southern continents. *Proc. zool. Soc. Lond.* **1902**(2): 393–413.
- 1903a. Fifteen new species and two new genera of tropical and southern Opiliones. *Ann. Mag. nat. Hist.* (7) **11**: 433–450, t. 11–12.
- 1903b. Arachnida. In: Forbes, H. O. ed. The Natural History of Sokotra and Abd-el-Kuri. *Special Bull. Liverpool Mus.* 1903: 177–205, t. 14, 26.
- ROEWER, C. F. 1912. Die Familien der Assamiden und Phalangodiden der Opiliones-Laniatores. (= Assamiden, Dampetriden, Phalangodiden, Epedaniden, Biantiden, Zalmoxiden, Samoiden, Palpipediden anderer Autoren.). *Arch. Naturgesch.* **78A**(3): 1–242.
- 1913. Opiliones. In: *Voyage de Ch. Aluaud et R. Jeannel en Afrique Orientale (1911–1912). Resultats scientifiques. Arachnides I.* Paris.
- 1914. Die Familie der Triaenonychidae der Opiliones Laniatores. *Arch. Naturgesch.* **80A**(12): 61–168.
- 1915. 106 neue Opilioniden. *Arch. Naturgesch.* **81A**(3): 1–152.
- 1916. 52 neue Opilioniden. *Arch. Naturgesch.* **82A**(2): 90–158.
- 1923. *Die Weberknechte der Erde. Systematische Bearbeitung der bisher bekannten Opiliones.* Jena: G. Fischer.
- 1927. Weitere Weberknechte I. I. Ergänzung der: 'Weberknechte der Erde', 1923. *Abh. naturw. Ver. Bremen* **26**(2): 261–402, 1 t.
- 1931. Über Triaenonychiden. VI. Ergänzung der 'Weberknechte der Erde', 1923. *Z. wiss. Zool.* **138**(1): 137–185.
- 1935. Alte und neue Assamiidae. Weitere Weberknechte VIII (8. Ergänzung der 'Weberknechte der Erde' 1923). *Veröff. dt. Kolon. u. Uebersee-Mus. Bremen* **1**(1): 1–168, t. 1–9.
- 1936. Opilioniden von Mauritius. *Veröff. dt. Kolon. u. Uebersee Mus. Bremen* **1**(3): 335–341, t. 14.
- 1939. Opiliones. In: *Exploration du Parc National Albert. I. Mission G. F. de Witte 1933–1935.* Bruxelles **27**(7): 27–29.
- 1940. Neue Assamiidae und Trogulidae. Weitere Weberknechte X. (10. Ergänzung der 'Weberknechte der Erde' 1923). *Veröff. dt. Kolon. Uebersee-Mus. Bremen* **3**(1): 1–31, t. 1–2.
- 1942. Opiliones, Pedipalpi und Araneae von Fernando Poo. 21. Beitrag zu den wissenschaftlichen Ergebnissen der Westafrika Expedition Eidmann 1939/40. *Veröff. dt. Kolon. u. Uebersee-Mus. Bremen* **3**(3): 244–258, t. 19.
- 1949a. Über Phalangodiden I. (Subfam. Phalangodinae, Tricommatinae, Samoinae.) Weitere Weberknechte XIII. *Senckenbergiana* **30**(1–3): 11–61, 14 tt.
- 1949b. Über Phalangodidae II. Weitere Weberknechte XIV. *Senckenbergiana* **30**(4–6): 247–289, 12 tt.
- 1950. Opiliones und Solifuga aus Belgisch Congo. *Revue Zool. Bot. Afr.* **44**(1): 30–55.
- 1951. Einige in Höhlen und Termitenbauten gefundene Assamiidae (Opiliones) aus dem Belgischen Congo-Gebiet. *Revue Zool. Bot. Afr.* **44**(4): 321–327.
- 1952a. Solifuga, Opiliones, Pedipalpi und Scorpiones (Arachnoidea). In: *Exploration du Parc National de l'Upemba. Mission G. F. de Witte (1946–1949)* **5**. Bruxelles: Institut des Parcs Nationaux du Congo Belge. 1–36.
- 1952b. Opilioniden und Solifugen aus Ost-Afrika. *Veröff. Ueberseemus. Bremen (A)* **2**: 87–90.
- 1953. Opiliones aus Französisch-Westafrika, gesammelt durch Herrn Dr A. Villiers. *Bull. Inst. fr. Afr. noire* **15**(2): 610–630.

- 1954. Einige neue Opiliones Laniatores und Solifugae. *Abh. naturw. Ver. Bremen* 33(3): 377–384.
- 1956. Journey to Northern Ethiopia (Simien), 1952–3: Arachnida, Opiliones. *J. Linn. Soc. Zool.* 43(290): 93–95.
- 1957. Über Oligolophinae, Caddoinae, Sclerosomatinae, Leiobuninae, Neopilioninae und Leptobuninae (Phalangiidae, Opiliones Palpatores). (Weitere Weberknechte XX). *Senckenberg. biol.* 38(5/6): 323–358, t. 26.
- 1958. Opiliones. In: *La réserve naturelle integrale du Mont. Nimba. Mem. Inst. fr. Afr. noire* 53: 229–240.
- 1959. Opiliones der II. Mont Nimba-Collection von Prof. M. Lamotte. *Bull. Mus. Hist. nat. Paris* (2)31: 355–358.
- 1961a. Opilioniden aus Ost-Congo und Ruanda-Urundi. *Annles Mus. r. Afr. cent. Sci. Zool.* 95, 48 pp.
- 1961b. Einige Solifuguen und Opilioniden aus der palaeartischen und äthiopischen Region. *Senckenberg. biol.* 42(5/6): 479–490, t. 27.
- 1961c. Opilioniden und Araneen. In: *Le Parc National du Niokolo Koba. 2. Mém. Inst. fr. Afr. noire* 62: 33–81.
- ROSAS COSTA, J. A. 1950. Sinopsis de los generos de Sironidae, con la descripcion de dos generos y una especie nuevos (Opiliones, Cyphophthalmi). *Arthropoda* 1(2/4): 125–151.
- SHEAR, W. A. 1975. The opilionid family Caddidae in North America, with notes on species from other regions (Opiliones, Palpatores, Caddoidea). *J. Arachnol.* 2(2): 65–88.
- 1980. A review of the Cyphophthalmi of the United States and Mexico, with a proposed reclassification of the suborder (Arachnida, Opiliones). *Am. Mus. Novit.* 2705, 34 pp.
- 1985. *Marwe coarctata*, a remarkable new cyphophthalmid from a limestone cave in Kenya (Arachnida, Opiliones). *Am. Mus. Novit.* 2830, 6 pp.
- SIMON, E. 1879. [Opiliones from Réunion] *Ann. Soc. ent. Belg.* 22: 187–188 [not seen]
- 1885. Matériaux pour servir à la faune arachnologique de l'Asie Méridionale. *Bull. Soc. zool. Fr.* 10: 1–39, t. 10.
- SÖRENSEN, W. 1896. Opiliones Laniatores a cl. Dr Yngve Sjöstedt in Kamerun (Africa Centrali) collectos. *Ent. Tidskr.* 17: 177–202.
- 1910. Arachnoidea. 4. Opiliones. In: *Y. Sjöstedt. Wissenschaftliche Ergebnisse der schwedischen zoologischen Expedition nach dem Kilimandjaro, dem Meru und den umgebenden Massaiesteppen Deutsch-Ostafrikas 1905–1906.* 3. Band, Abt. 20 – Arachnoidea. Stockholm: P. Palmquists AB 3(20): 59–82, t. 4.
- STARĘGA, W. 1984. Revision der Phalangiidae (Opiliones), III. Die afrikanischen Gattungen der Phalangiinae, nebst Katalog aller afrikanischen Arten der Familie. *Annls Zool. Warsz.* 38(1): 1–79.
- 1988. A new species of *Caddella* (Opiliones: Caddidae) from South Africa. *Ann. Natal Mus.* 29(2): 529–532.
- 1989a. Harvestmen (Opiliones) from the Mascarene Islands and resurrection of the family Zalmodidae. *Ann. Natal Mus.* 30(1): 1–8.
- 1989b. A new species of *Larifuga* Loman from the Cape Province, South Africa (Opiliones: Triaenonychidae). *Ann. Natal Mus.* 30(1): 9–13.
- Strand, E. 1911. [Neue Namen] *Abh. Ber. K. zool. anthrop.-ethn. Mus. Dresden* 13(5): 7 [not seen]
- 1932. Miscellanea nomenclatorica zoologica et palaeontologica. III. *Folia zool. hydrobiol.* 4: 133–147.

Date received: 9 October, 1989